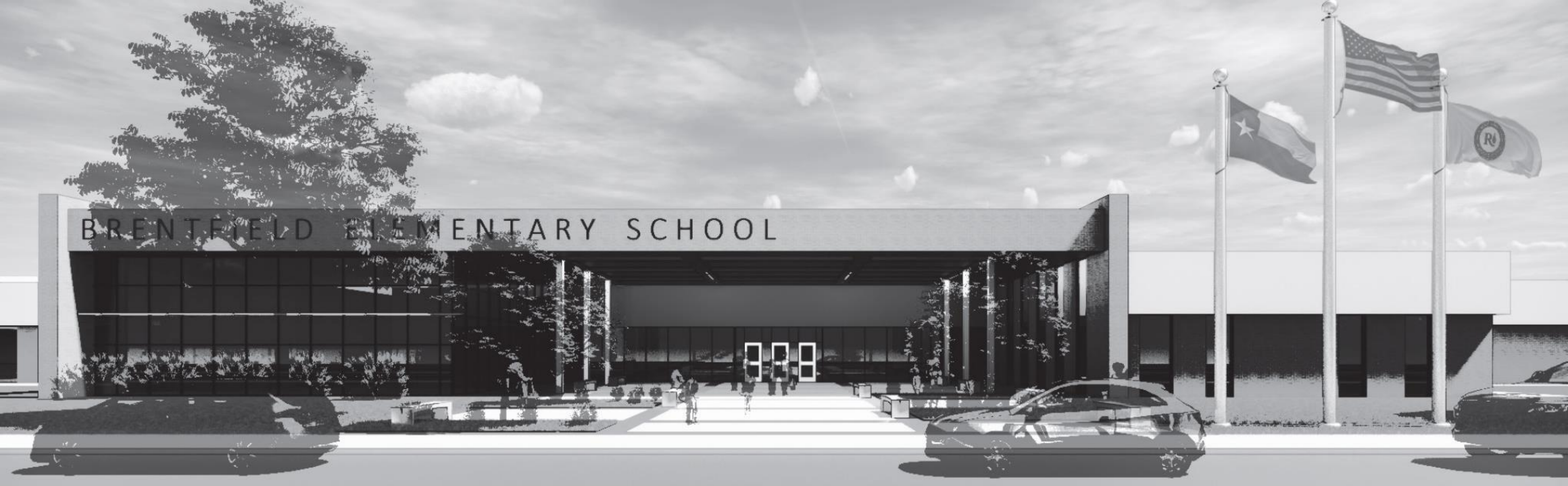




RICHARDSON ISD
BRENTFIELD ELEMENTARY SCHOOL
ADDITIONS AND RENOVATIONS

FINAL COMMUNITY MEETING

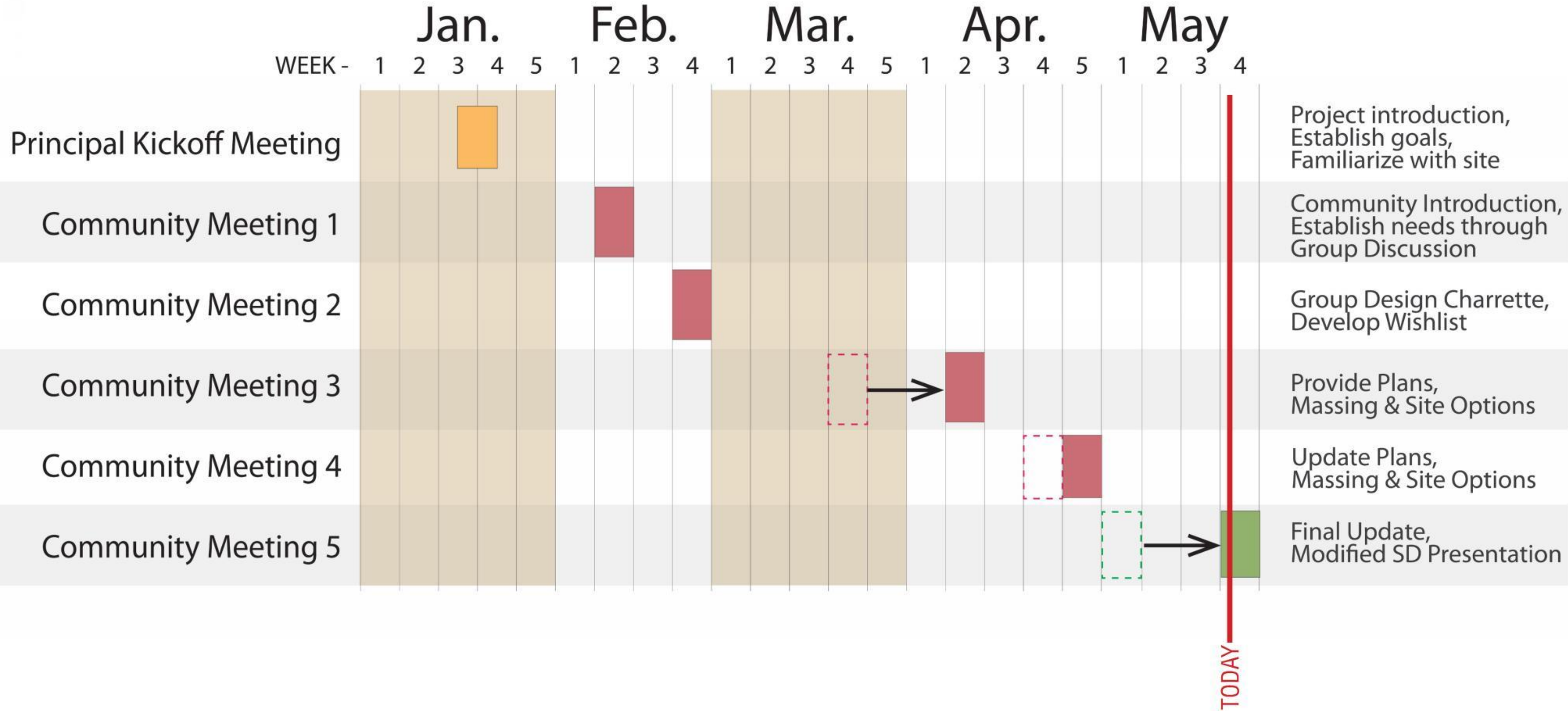
MAY 26, 2020



AGENDA

- PROJECT SUMMARY
- DESIGN PRESENTATION
- NEXT STEPS & PROJECT SCHEDULE
- QUESTIONS

PROJECT SCHEDULE



PROJECT SUMMARY

Brentfield Elementary School

- Grades K-6
- ~97,000 S.F. existing buildings
- Existing capacity – 884 students
- Existing parking - 92 Spaces

Addition and renovation

- Storm shelter
- Fire Sprinkler System throughout
- Connect 2 existing buildings
- Expand student capacity – to accommodate 1000 students
- Addition ~30,000-40,000 S.F.
- Add ~160 parking spaces to bring total onsite parking to ~250 (1 space per 500 SF)

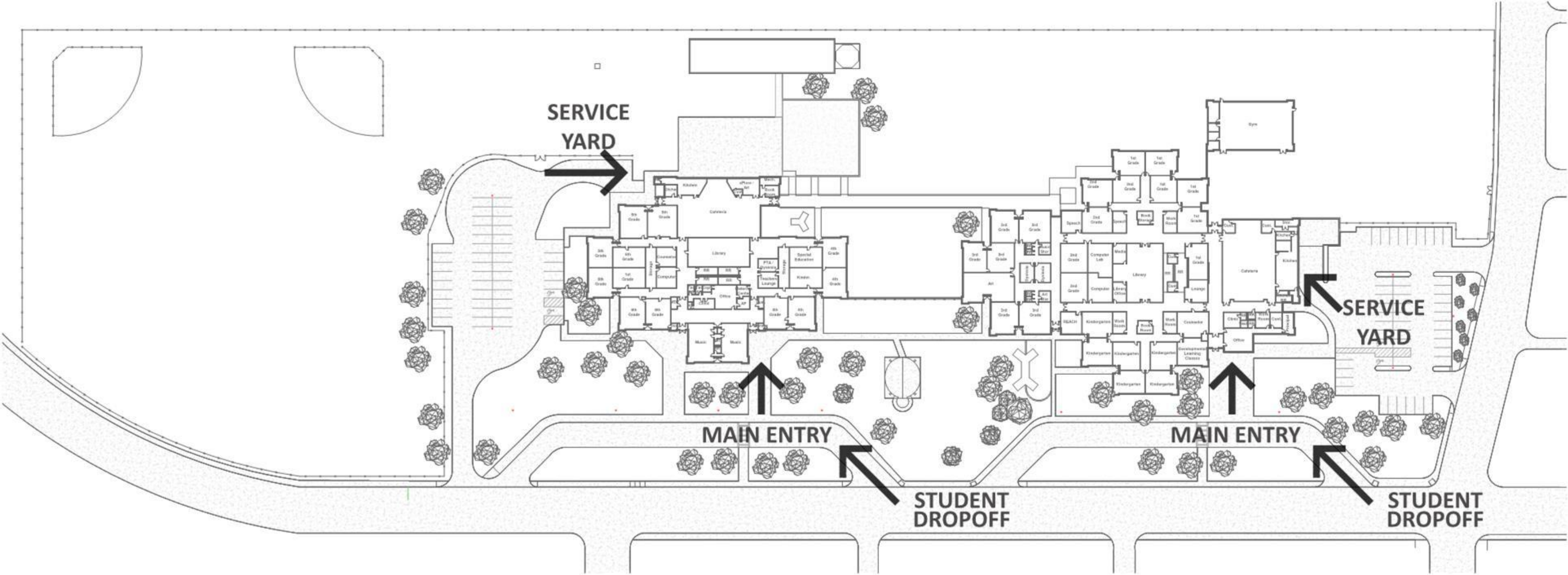


ADDITION / RENOVATION COMPONENTS

- Central cafeteria with divided dining areas and a stage
- New gymnasium with bleachers
- Two, divided, playgrounds with covered canopies
- Special education expansion on southeast corner of east building with separate entrance
- Pod Classrooms with collaboration
- Group restroom & staff restroom expansion
- Classroom expansion for 1000 student school capacity (6 classrooms per grade level)
- Additional teacher workroom spaces throughout the campus
- 160 additional parking spaces
- Fire loop and separated student dropoff zones
- Central administration with separated administrative suite from clinic/counseling area
- Storm shelter for entire campus
- Fire sprinkler system throughout
- Updated finishes, furnishings, and lighting throughout
- Air conditioned, interior access to existing gymnasium
- Updated front entry and inviting covered courtyard

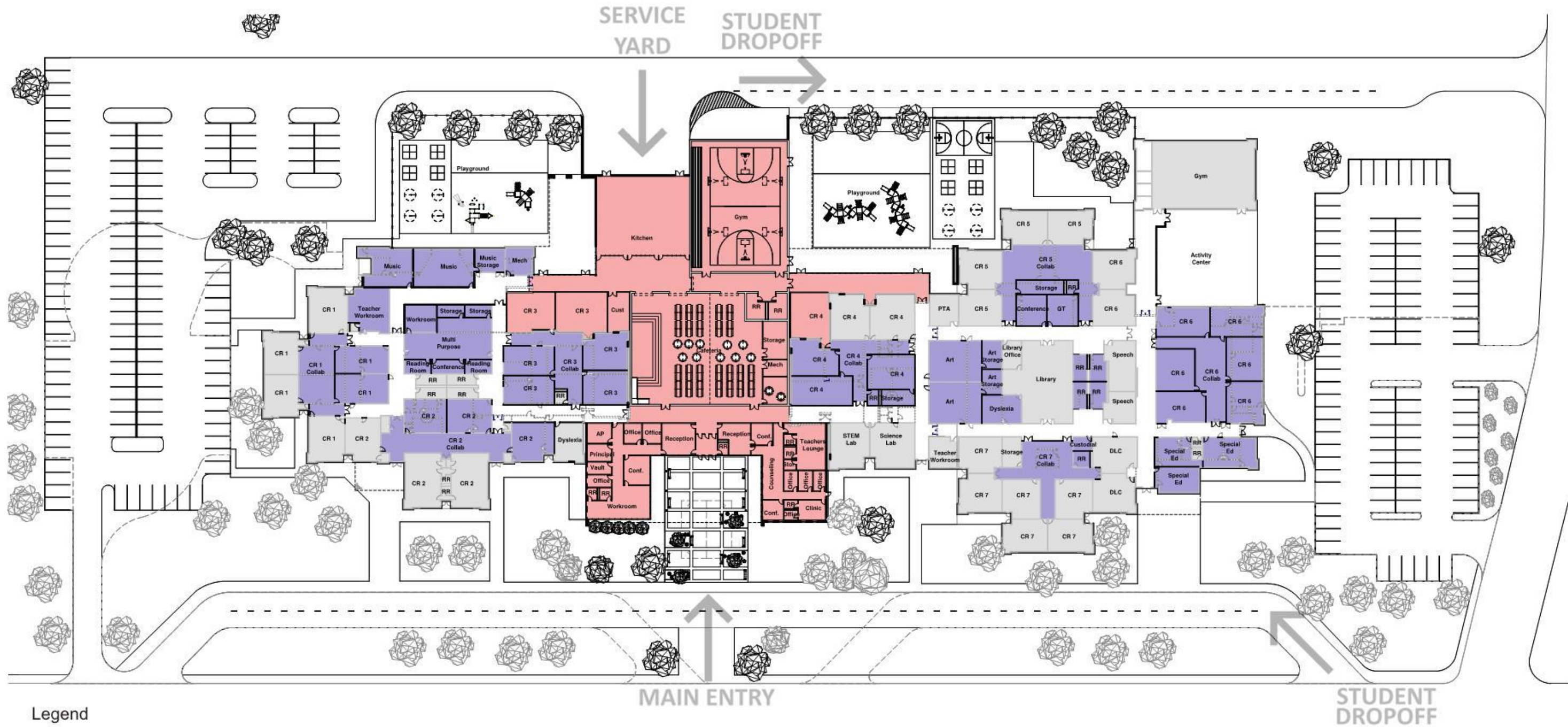


EXISTING FLOOR PLAN



FLOOR PLAN

RENOVATION OVERVIEW



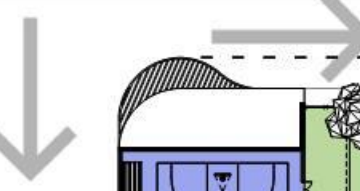
Legend

- - New
- - Heavy renovation
- - Minor renovation / Updates



FLOOR PLAN BY DEPARTMENT

SERVICE YARD
STUDENT DROPOFF

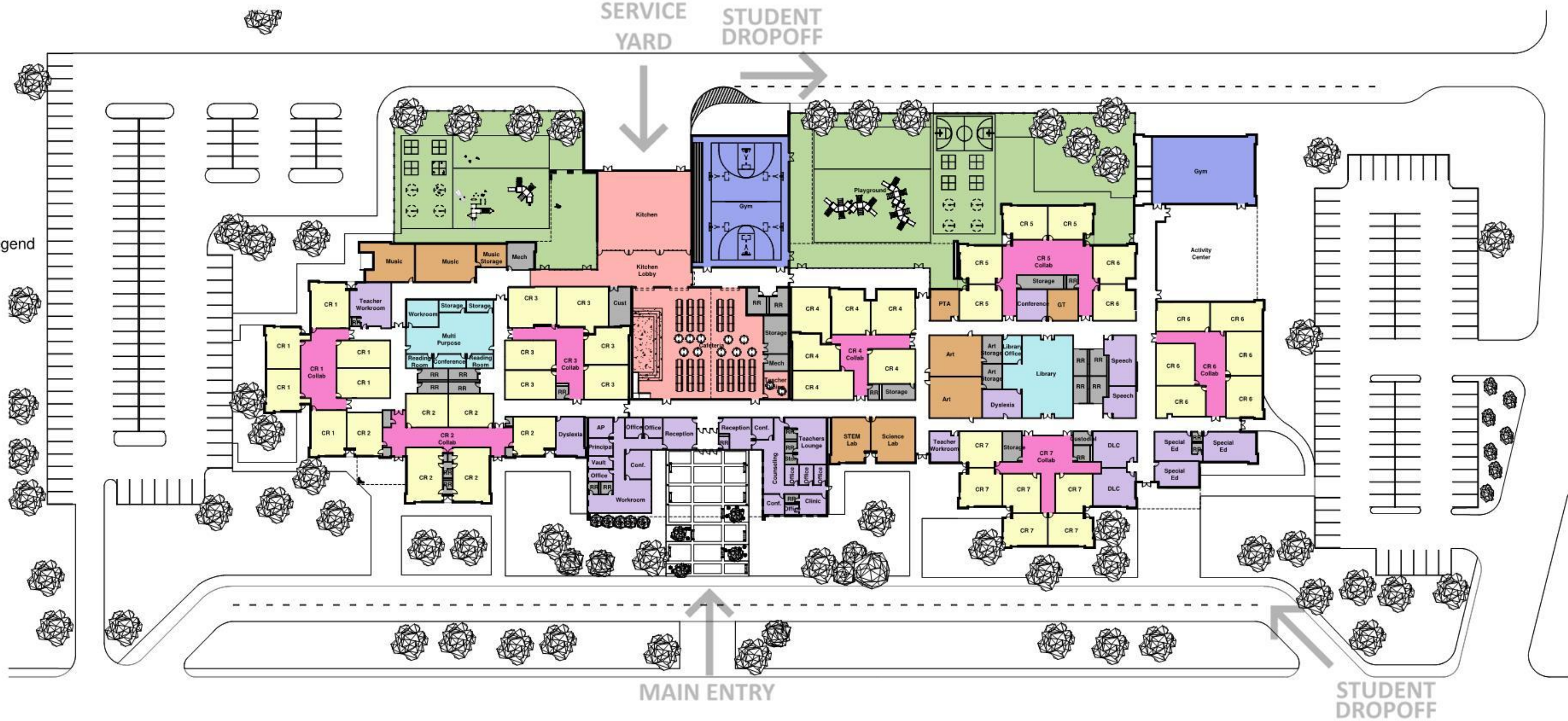


MAIN ENTRY

STUDENT DROPOFF

Department Legend

- Administration
- Cafeteria
- Classrooms
- Collaboration
- Gym
- Library
- Playground
- Specials
- Utility



AERIAL VIEW

ADDITION / RENOVATION



AERIAL VIEW

COMPLETE



FRONT ENTRY VIEW



FRONT ENTRY

APPROACH VIEW



FRONT ENTRY

CANOPY VIEW



NORTH AERIAL VIEW



NORTHEAST PLAYGROUND VIEW



NORTHWEST PLAYGROUND VIEW





WRA Architects

WHEN WHO YOU WORK WITH MATTERS

SUMMARY OF FINDINGS

FROM OUR FIRST MEETING

LIKES

Grade level pods

Separation of 'littles and bigs'

Natural light

Collaboration space

Outdoor spaces (playground soccer fields etc.)

NEEDS

Large presentation space (with stage)

Rework drop off

Centralized administration

Larger gym

Kitchen/cafeteria rework

Unified building (creating a sense of community)

DISLIKES

Hauling food to separate cafeteria

The gym is too small

Lack of security measures

Lack of parking

Traffic in carpool

Only one playground

WANTS

Better parking solutions for staff and visitors

2nd playground area

Security fence

Meeting space (parent teacher conferences)

Expanding technology in the classrooms

Gifted & talented learning space

PROGRAM SUMMARY

Projected Enrollement		Program for 1000 Students				
SPACE/FUNCTION	No. Rooms	Net SF	SubTotal Net SF	Capacity per Room	Total Code Capacity	
ADMINISTRATION						
Security Vestinule	1	150	150			
Reception/ Attend./ Waiting	1	400	400			
Clinic	1	335	335			
Restroom/ Shower	1	85	85			
Nurse's Office	1	90	90			
Teacher's Mailbox Area	1	50	50			
Counselor's Office	2	125	250			
Counseling Area	1	125	125			
Conference Room	1	200	200			
Office - DMS/PEIMS Clerk	1	150	150			
Assistant Principal	1	180	180			
Principal	1	200	200			
Principal Secretary	1	150	150			
Workroom/ Kitchen	1	200	200			
Storage	1	100	100			
Staff Restroom - Men	2	70	140			
Staff Restroom - Women	2	70	140			
Administration Subtotals			2,945			
SPECIAL SERVICES						
Special Education	1	900	900			
Multipurpose Classroom	1	1,000	1,000			
Offices (shared)	4	200	800			
Special Services Subtotals			2,700			

SPACE/FUNCTION	No. Rooms	Net SF	SubTotal Net SF	Capacity per Room	Total Code Capacity
ACADEMIC					
Classrooms	5	850	4,250	25	
Classroom Storage	3	75	375		
Small Collaboration	6	100	600		
Large Collaboration	4	400	1,600		
Academic Subtotals			6,825	25	0
LIBRARY					
West Library	1	2,400	2,400		
Workroom with Workstation	1	200	200		
Technology Storage	1	200	200		
Library Subtotals			2,800	0	0
SERVICE AND SUPPORT SPACES					
Boys Restrooms	2	250	500		
Girls Restrooms	2	250	500		
General Receiving	1	200	200		
Custodial Closet	1	50	50		
Exterior Storage	1	50	50		
Electrical Distribution Rooms	2	50	100		
IDF	2	50	100		
Fire Riser	1	100	100		
Service and Support Spaces Subtotals			1,600	0	0
PHYSICAL EDUCATION					
Gymnasium (Capacity 1150)	1	5,750	5,750		
Storm Shelter Restrooms and Mechanical	1	300	300		
Gymnasium Storage/ Teacher Workstation	1	300	300		
Physical Education Subtotals			6,350	0	0

SPACE/FUNCTION	No. Rooms	Net SF	SubTotal Net SF	Capacity per Room	Total Code Capacity
CAFETERIA & KITCHEN					
Kitchen and Serving	1	1,800	1,800		
Cafeteria Addition	1	2,000	2,000		
Custodial/ Utility	1	75	75		
Walk-in Freezer	1	100	100		
Walk-in Cooler	1	80	80		
Warewashing	1	200	200		
Dry Food Storage	1	150	150		
Child Nutrition Manager's Office	1	100	100		
Staff restroom	1	50	50		
Stage	1	800	800		
Ramp	1	150	150		
Table and Chair Storage	1	250	250		
Teacher Dining	1	300	300		
Student Restrooms	2	300	600		
Cafeteria & Kitchen Subtotals			6,655		
Outdoor Spaces					
Playground	1	2,000	2,000		
			2,000		
TOTAL NET AREA		75%	31,875		
Walls, Corridors, Electrical, Mechanical etc.		33%	10,519		
TOTAL GROSS AREA			Total Gross SF	Capacity	
			42,394	25	

***TO INCREASE THE CAPACITY OF THE SCHOOL FROM 884-1000 WE NEED TO ACCOMMODATE 116 ADDITIONAL STUDENTS. WITH CLASSROOM SIZES RANGING FROM 22-28 STUDENTS PER CLASSROOM, WE CALCULATED THAT WE WOULD NEED 4.64 ADDITIONAL CLASSROOMS**

CHARRETTE SUMMARY

The image displays four hand-drawn architectural floor plans for Brentfield Elementary School additions and renovations, arranged in a 2x2 grid. Each plan includes a legend at the bottom and various handwritten annotations.

- Top Left Plan:** Features a central administration building and a cafeteria. Handwritten notes include "#Too Many Options" and "Grade level pack of 6 classroom (future flexibility)".
- Top Right Plan:** Shows a layout with a central courtyard and multiple classrooms. Notes include "#YodaBest", "Middle Central", and "Flexibility classes per section".
- Bottom Left Plan:** Labeled "The Mavs", it shows a layout with a library and a cafeteria. Notes include "develop" and "Extra Parking".
- Bottom Right Plan:** Labeled "East", it shows a layout with a library and a cafeteria. Notes include "Lost SSS" and "3 Lanes".

- Every group had a lot of similar ideas, but a lot of unique ideas as well:
- No group had the same solution for the library
 - No group had the same solution for the gym
 - Every group had a similar cafeteria solution
 - Every group had a similar administration solution