

Richardson Independent School District Demographic Update January 14, 2013

Demographics and Planning for School Districts



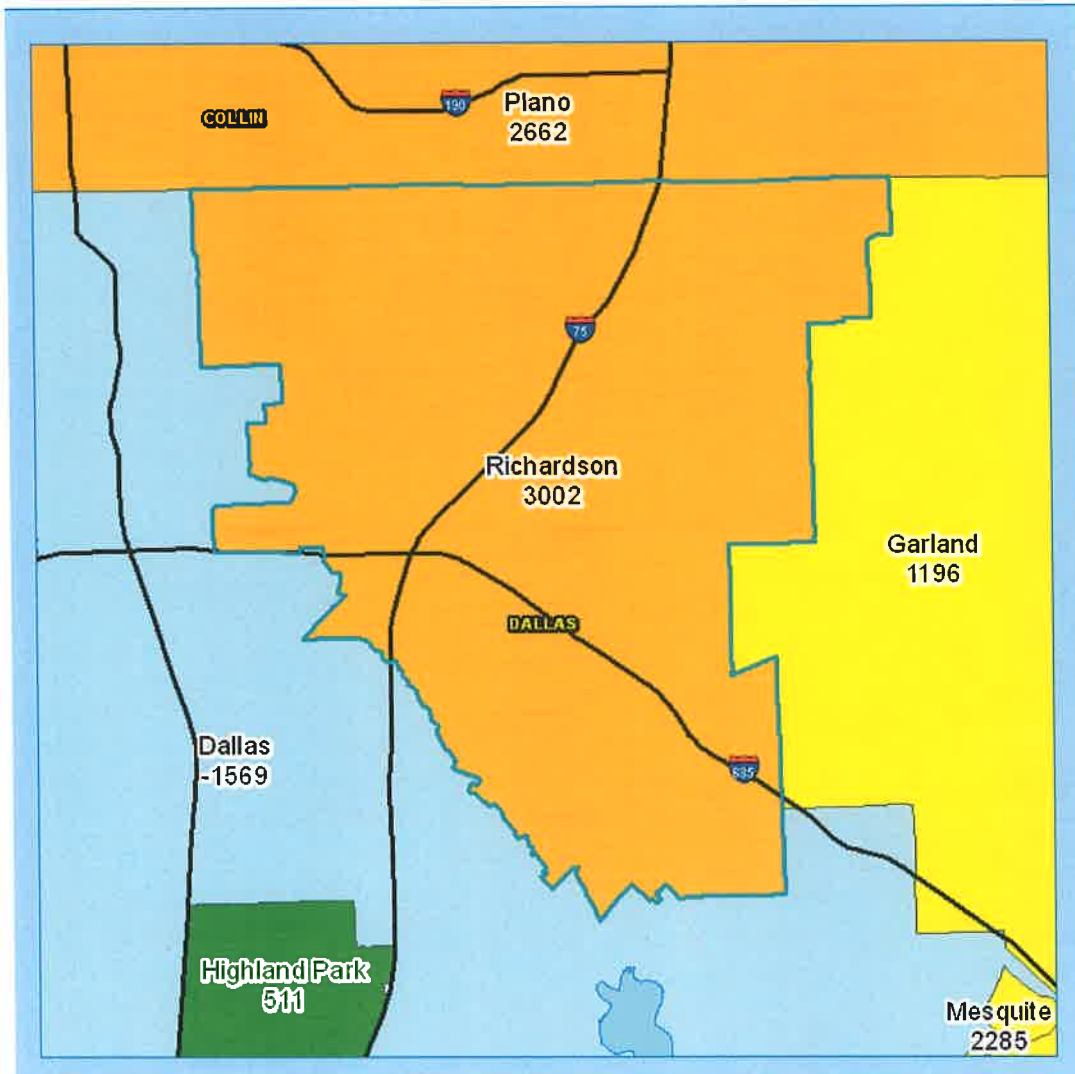
TEMPLETON
DEMOGRAPHICS

Learn from Yesterday...Understand Today...Plan for Tomorrow¹

Economic Conditions

- Texas gained 278,800 jobs between Nov. 2011 and Nov. 2012 continuing to lead the nation in job growth(Susan Combs, Texas Comptroller)
- The state's unemployment rate has been at or below the national rate for 71 consecutive months (Susan Combs, Texas Comptroller)
- Unemployment rates - Texas Labor Market Review (November 2012)
 - U.S. 7.4%
 - Texas 5.8%
 - DFW MSA 5.7%
 - Collin County 5.2%
 - Dallas County 6.2%
 - City of Dallas 6.3%
 - City of Richardson 5.0%
- DFW 3Q12 annual new home starts up 32% from 3Q11(Metrostudy)
- **Home ownership patterns changing resulting from tight lending requirements.**
- Sales tax collections have **increased for 30 consecutive months** (year-over-year), boosted by strong business spending in the oil/natural gas and manufacturing sectors, and to a lesser extent by retail sales activity. (Susan Combs, Texas Comptroller)
- Oil and natural gas production tax collections for fiscal 2012 were **41 percent higher** than during the same period in 2011 (Susan Combs, Texas Comptroller)

5-Year Total Enrollment Change: 2006/07 – 2011/12



Rank	District Name	2006/07	2011/12	5-Year 2006/07 - 2011/12	5 YR Pct Growth
1	FRISCO ISD	23,777	40,123	16,346	68.7%
2	NORTHWEST ISD	10,388	16,626	6,238	60.1%
3	KELLER ISD	27,905	33,130	5,225	18.7%
4	DENTON ISD	19,722	24,845	5,123	26.0%
5	MANSFIELD ISD	28,015	32,564	4,549	16.2%
6	EAGLE MT-SAGINAW ISD	12,655	17,155	4,500	35.6%
7	FORT WORTH ISD	79,457	83,109	3,652	4.6%
8	MCKINNEY ISD	21,289	24,733	3,444	16.2%
9	ALLEN ISD	16,463	19,505	3,042	18.5%
10	RICHARDSON ISD	34,042	37,044	3,002	8.8%
11	WYLIE ISD	9,997	12,926	2,929	29.3%
12	LEWISVILLE ISD	49,060	51,920	2,860	5.8%
13	PLANO ISD	52,997	55,659	2,662	5.0%
14	PROSPER ISD	2,224	4,847	2,623	117.9%
15	MESQUITE ISD	36,002	38,287	2,285	6.3%
16	FORNEY ISD	6,149	8,275	2,126	34.6%
17	GRAND PRAIRIE ISD	24,616	26,607	1,991	8.1%
18	IRVING ISD	32,951	34,770	1,819	5.5%
19	ROCKWALL ISD	12,517	14,330	1,813	14.5%
20	BURLESON ISD	8,553	10,260	1,707	20.0%

New Home Construction by ISD

Rank	SCHOOL DISTRICT	ANNUAL CLOSINGS	ANNUAL STARTS	VACANT DEVELOPED LOTS	FUTURE LOTS
1	FRISCO ISD	1,893	2,034	4,393	11,113
2	NORTHWEST ISD	1,177	1,085	1,886	22,734
3	KELLER ISD	910	933	1,548	2,767
4	DENTON ISD	852	907	2,364	13,975
5	DALLAS INDEPENDENT SCHOOL DISTRICT	809	677	2,389	7,909
6	LEWISVILLE ISD	678	664	1,753	1,653
7	PROSPER ISD	633	749	1,429	14,707
8	MANSFIELD ISD	612	606	1,183	6,042
9	EAGLE MT-SAGINAW ISD	574	615	2,158	20,267
10	MCKINNEY ISD	546	567	1,383	2,618
11	ALLEN ISD	513	545	863	1,618
13	ROCKWALL ISD	342	405	1,897	7,708
15	WYLIE ISD (48085)	297	294	494	1,188
18	CARROLLTON-FARMERS BRANCH ISD	266	309	464	524
20	PLANO ISD	260	371	951	1,663
21	GARLAND ISD	226	238	629	3,017
37	MESQUITE ISD	107	110	199	4,612
39	HIGHLAND PARK ISD	93	98	97	89
40	LOVEJOY ISD	91	98	141	73
46	IRVING ISD	62	40	364	140
47	PRINCETON ISD	62	78	296	1,383
53	RICHARDSON ISD	45	48	178	183
54	LANCASTER ISD	42	39	957	3,209
55	SUNNYVALE ISD	30	31	174	914

Source: Metrostudy 3Q12

Existing Enrollment Trends

	GRADE LEVEL ENROLLMENT HISTORY VERSES PROJECTION FROM JANUARY 2012																		
	Year (Oct.	Other	KG	1st	2nd	3rd	4th	5th	6th	7th	8th	9th	10th	11th	12th	Total	Growth	Percent	
	2007/08	1354	2816	2835	2690	2579	2479	2523	2465	2538	2518	2701	2404	2150	2157	34209	154	1%	
	2008/09	1427	2857	2887	2791	2682	2540	2460	2453	2551	2475	2736	2345	2129	2089	34422	213	1%	
	2009/10	1502	2881	2891	2847	2702	2639	2525	2407	2570	2509	2689	2490	2093	2114	34859	437	1%	
	2010/11	1612	3033	2902	2949	2898	2752	2673	2597	2481	2588	2777	2445	2247	2115	36069	1210	3%	
	2011/12	1647	3262	3089	2925	2927	2879	2750	2710	2668	2498	2844	2511	2223	2109	37042	973	3%	
Actual	2012/13	1707	3309	3279	3100	2937	2905	2870	2771	2798	2572	2827	2569	2290	2108	38042	1000	3%	
Projection	2012/13	1647	3023	3263	3095	2912	2921	2871	2757	2799	2648	2728	2576	2271	2109	37620	578	2%	
variance		60	286	16	5	25	-16	-1	14	-1	-76	99	-7	19	-1	422	422		

* Green Box = Largest grade
Yellow = second largest

- 1,000 New Students
- Kindergarten increased for the 5th consecutive year
- KG - 2nd all exceed 3,000 students
- KG-3rd grade enrollment now exceeds 9th-12th by over 2,800 students, an increase of over 300 students from last year

Richardson ISD Race/Ethnicity and Economically Disadvantaged

Year (Oct.)	Total	Black or African American	%	Hispanic	%	American Indian or Alaska Native	%	Asian	%	White	%	Two or more races	%	Native Hawaiian / Other Pacific	%
2008/09	34,422	8,606	25.0%	11,971	34.8%	147	0.4%	2,583	7.5%	11,115	32.3%				
2009/10	34,859	8,733	25.1%	12,505	35.9%	135	0.4%	2,554	7.3%	10,932	31.4%				
TEA CHANGES IN RACE/ETHNICITY REPORTING															
2010/11	36,069	8,413	23.3%	13,756	38.1%	119	0.3%	2,383	6.6%	10,527	29.2%	826	2.3%	45	0.1%
2011/12	37,042	8,564	23.1%	14,327	38.7%	128	0.3%	2,544	6.9%	10,554	28.5%	882	2.4%	43	0.1%
2012/13	38,042	8,689	22.8%	14,926	39.2%	135	0.4%	2,571	6.8%	10,741	28.2%	948	2.5%	32	0.1%

Note: In 2009 the TEA changed the way race and ethnicity enrollments were reported. This new requirement may create challenges when reviewing for historical reference.

Year (Oct.)	Economically Disadvantaged	% ED
2008/09	18,022	52.4%
2009/10	19,151	54.9%
2010/11	20,441	56.7%
2011/12	21,078	56.9%
2012/13	21,994	57.8%

Increase in economically disadvantaged almost the same as total enrollment growth.

Student Mobility

2011/12 to 2012/13 Enrollment Growth

(Oct.)	Other	KG	1st	2nd	3rd	4th	5th	6th	7th	8th	9th	10th	11th	12th	Total	Growth
2011/12	1,647	3,262	3,089	2,925	2,927	2,879	2,750	2,710	2,668	2,498	2,844	2,511	2,223	2,109	37,042	973
2012/13	1,707	3,309	3,279	3,100	2,937	2,905	2,870	2,771	2,798	2,572	2,827	2,569	2,290	2,108	38,042	1,000

New Student to district = Student ID did not exist in the system last year.

	Other	KG	1st	2nd	3rd	4th	5th	6th	7th	8th	9th	10th	11th	12th	Total
New 12/13	1,608	1,974	568	486	456	401	392	401	344	294	531	279	198	117	8,049

Non-Returning Students = Student ID existed last year but did not roll forward and is no longer in system.

	Other	KG	1st	2nd	3rd	4th	5th	6th	7th	8th	9th	10th	11th	12th	Total
11/12 GRD	308	517	458	434	407	391	378	329	341	315	456	387	275	2,053	7,049

New Student Characteristics

- 36% Hispanic, 31% Black, 24% White
- 65% Economically disadvantaged
- 34% Single Family Housing in single family dwelling
- 66% Multi-family housing (includes; apartments, tri-plex, duplex
- 70% Reside in City of Dallas
- 25% Reside in City of Richardson



Residential Activity

- Villas of Buckingham
- 67 Occupied Homes
- Vacant Developed Lots - 15
- Total Lots – 82
- 50 Students currently
- May yield over 60 students at build out
- Richland Elementary



Residential Activity

- Brick Row - 150 Townhomes platted with just over 60 complete or under construction.
- 49 New permits issued in 2012
- City indicates that 800 MF units, including condos have been approved. 500 apartments are complete and 77 more under construction. No condo activity as of yet.
- Richardson Terrace Elementary



- 30 Students currently reside in Brick Row Apartments
- 5 students currently reside in Townhomes
- At build out the development (MF and TH) may yield 100-150 students



Future Residential

- Lake Park Townhomes, LTD
- 135 Permits issued through city in 2012
- 135 Townhomes (Rental)
- 45 Single Family
- 70 students possible between two developments.
- Mohawk Elementary



Future Residential



GreenVUE

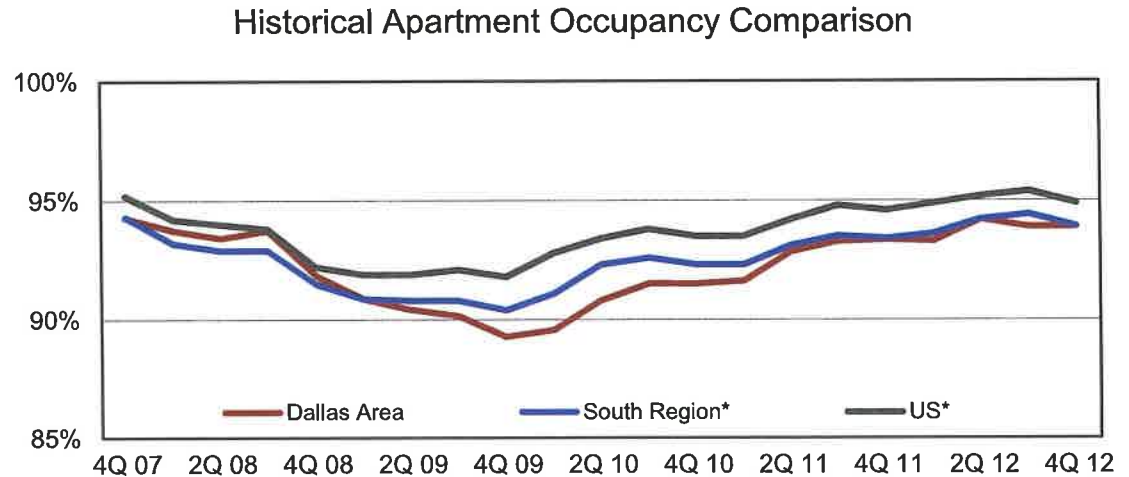
- 400 High Density Apartments
- Still seeking zoning approval
- January 28th ...maybe
- Low student yields expected (50-75 students)
- Mark Twain Elementary



Multi-Family Historical Occupancy

Dallas, Southern, & US Markets

Period	Dallas Area	South Region*	US*
4Q 07	94.3%	94.3%	95.2%
1Q 08	93.7%	93.2%	94.2%
2Q 08	93.4%	92.9%	94.0%
3Q 08	93.7%	92.9%	93.8%
4Q 08	91.9%	91.5%	92.2%
1Q 09	90.9%	90.9%	91.9%
2Q 09	90.4%	90.8%	91.9%
3Q 09	90.2%	90.8%	92.1%
4Q 09	89.3%	90.4%	91.8%
1Q 10	89.6%	91.1%	92.8%
2Q 10	90.8%	92.3%	93.4%
3Q 10	91.5%	92.6%	93.8%
4Q 10	91.5%	92.3%	93.5%
1Q 11	91.6%	92.3%	93.5%
2Q 11	92.8%	93.1%	94.2%
3Q 11	93.3%	93.5%	94.8%
4Q 11	93.4%	93.4%	94.6%
1Q 12	93.3%	93.6%	94.9%
2Q 12	94.2%	94.2%	95.2%
3Q 12	93.9%	94.4%	95.4%
4Q 12	93.9%	93.9%	94.9%



* 4Q 2011 preliminary data

Source: MPF Research

Multi-Family Historical Occupancy

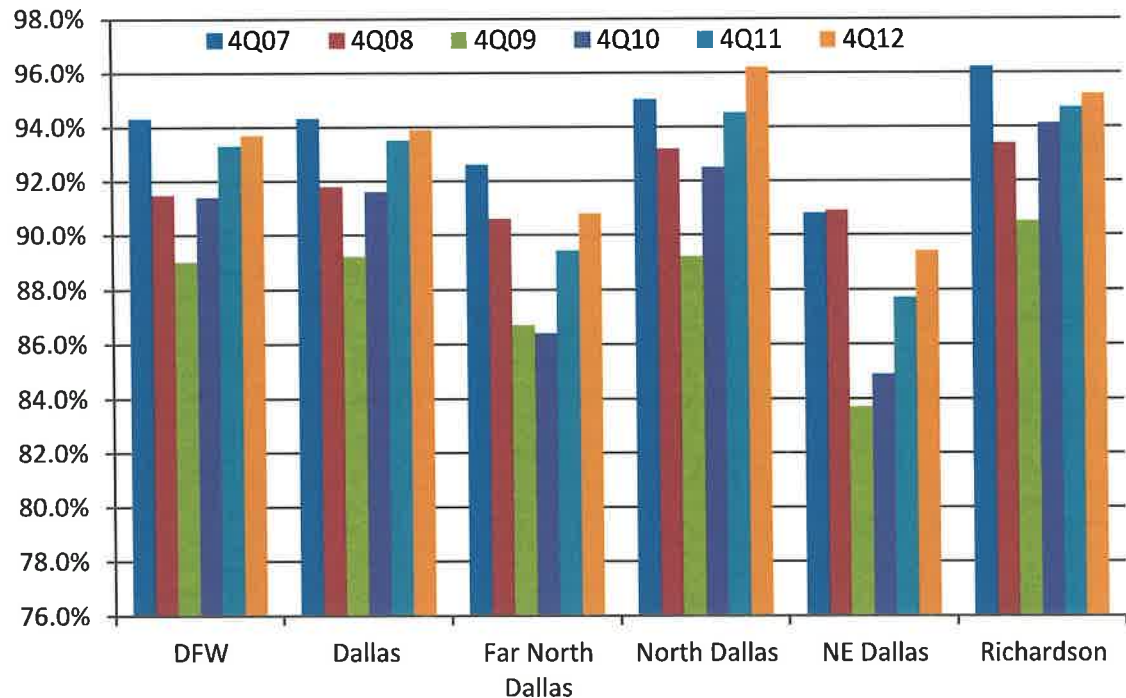
Richardson Markets

SUBMARKET OVERVIEW

RANKINGS

OCCUPANCY		
Rank	Submarket	Rate
24	Rockwall/Rowlett/Wylie	96.6%
8	North Dallas	96.2%
1	Intown Dallas	95.9%
21	Denton	95.4%
10	Richardson	95.2%

Two of the top 5 submarkets include parts of RISD.



Period	DFW	Dallas	Far North Dallas	North Dallas	NE Dallas	Richardson
4Q07	94.3%	94.3%	92.6%	95.0%	90.8%	96.2%
4Q08	91.5%	91.8%	90.6%	93.2%	90.9%	93.4%
4Q09	89.0%	89.2%	86.7%	89.2%	83.7%	90.5%
4Q10	91.4%	91.6%	86.4%	92.5%	84.9%	94.1%
4Q11	93.3%	93.5%	89.4%	94.5%	87.7%	94.7%
4Q12	93.7%	93.9%	90.8%	96.2%	89.4%	95.2%

Multi-Family Occupancy by Year Completed

Submarket Name	Product Niche 4Q12							
	Units	Occ Units	Total	2000+	1990s	1980s	1970s	Pre-1970
Far East Dallas	14,945	13,571	90.8%	95.2%	89.9%	91.7%	88.2%	89.1%
North Dallas	22,925	22,054	96.2%	95.4%	96.6%	96.4%	96.0%	96.8%
North East Dallas	24,354	21,769	89.4%	97.0%	95.4%	90.7%	87.2%	92.3%
Richardson	8,659	8,247	95.2%	96.1%	94.6%	95.9%	94.0%	96.9%
Totals	70,883	65,641	92.6%	95.9%	95.6%	92.3%	91.4%	91.6%

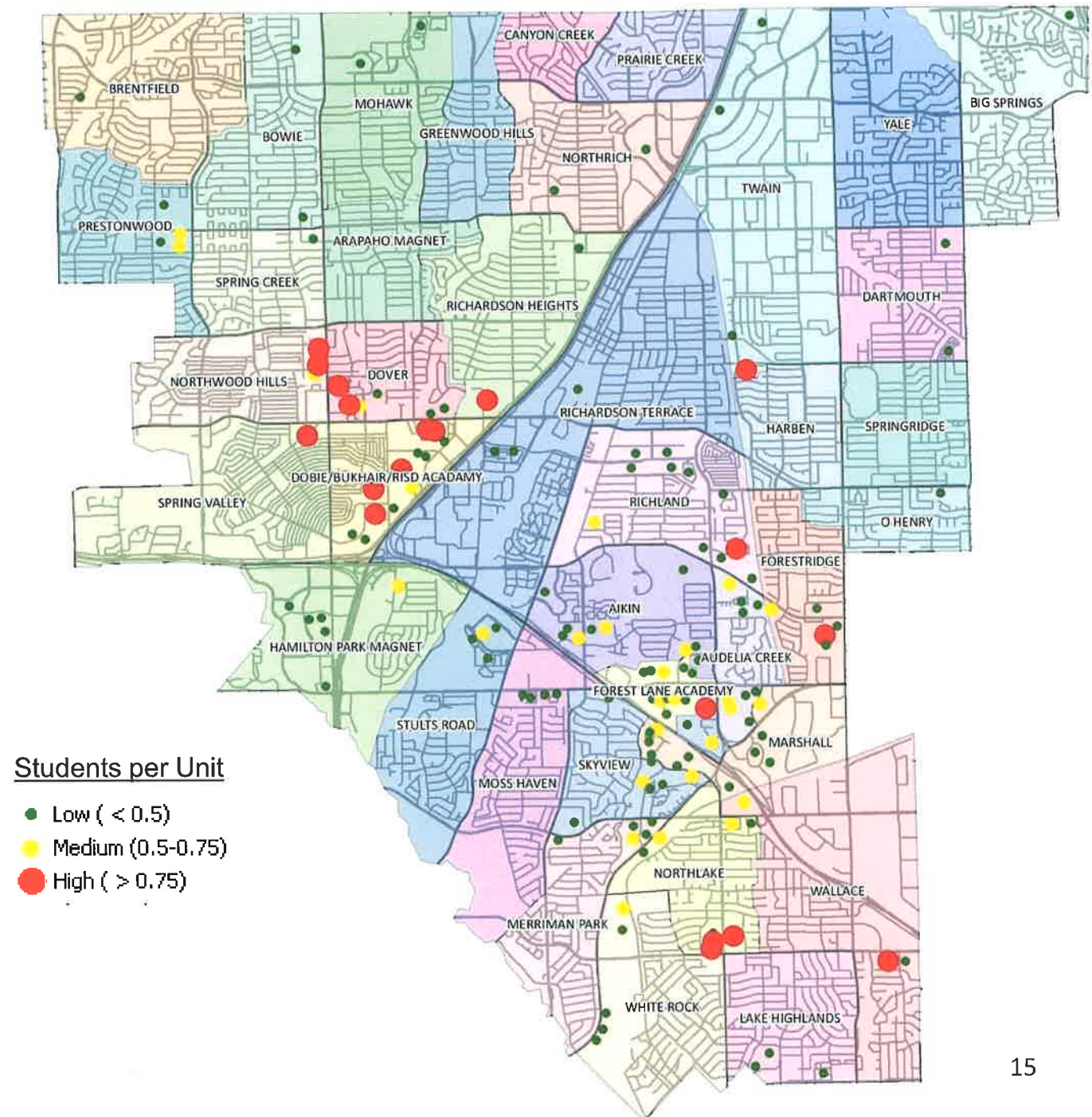
- RISD occupancy rates some of the highest in DFW.
- Increased occupancy rates from 4Q11 to 4Q12 in the markets that impact RISD accounted for over 1,000 new households in the area.

Source: MPF Research

Apartment Communities continue to impact RISD Growth

2012/2013

- 155 Complexes(over 100 units)
- 40,623 Units
- 15,099 students in 2012
- 14,772 students in 2011
- 327 additional students in apartments
- 0.37 12/13 Average Yield
- 0.36 11/12 Average Yield



Enrollment Projections

(by Grade)

GRADE LEVEL ENROLLMENT HISTORY AND PROJECTIONS																	
Year (Oct.)	Other	KG	1st	2nd	3rd	4th	5th	6th	7th	8th	9th	10th	11th	12th	Total	Growth	Percent
2007/08	1,354	2,816	2,835	2,690	2,579	2,479	2,523	2,465	2,538	2,518	2,701	2,404	2,150	2,157	34,209	154	0.50%
2008/09	1,427	2,857	2,887	2,791	2,682	2,540	2,460	2,453	2,551	2,475	2,736	2,345	2,129	2,089	34,422	213	0.62%
2009/10	1,502	2,881	2,891	2,847	2,702	2,639	2,525	2,407	2,570	2,509	2,689	2,490	2,093	2,114	34,859	437	1.27%
2010/11	1,612	3,033	2,902	2,949	2,898	2,752	2,673	2,597	2,481	2,588	2,777	2,445	2,247	2,115	36,069	1,210	3.47%
2011/12	1,647	3,262	3,089	2,925	2,927	2,879	2,750	2,710	2,668	2,498	2,844	2,511	2,223	2,109	37,042	973	2.70%
2012/13	1,707	3,309	3,279	3,100	2,937	2,905	2,870	2,771	2,798	2,572	2,827	2,569	2,290	2,108	38,042	1,000	2.70%
2013/14	1,707	3,339	3,297	3,280	3,077	2,938	2,921	2,905	2,839	2,767	2,842	2,570	2,335	2,201	39,018	976	2.57%
2014/15	1,707	3,346	3,340	3,278	3,273	3,050	2,939	2,937	2,924	2,781	3,080	2,639	2,339	2,208	39,841	823	2.11%
2015/16	1,707	3,305	3,350	3,312	3,260	3,243	3,040	2,973	2,967	2,836	3,092	2,902	2,401	2,222	40,610	769	1.93%
2016/17	1,707	3,314	3,312	3,311	3,283	3,220	3,230	3,075	2,994	2,932	3,138	2,857	2,639	2,284	41,296	686	1.69%
2017/18	1,707	3,306	3,293	3,280	3,299	3,241	3,202	3,241	3,088	2,922	3,259	2,943	2,598	2,504	41,883	587	1.42%
2018/19	1,707	3,312	3,304	3,278	3,281	3,265	3,244	3,223	3,315	2,994	3,238	3,063	2,676	2,467	42,367	484	1.16%
2019/20	1,707	3,280	3,289	3,297	3,231	3,248	3,251	3,259	3,225	3,252	3,293	2,986	2,784	2,541	42,643	276	0.65%
2020/21	1,707	3,281	3,290	3,282	3,284	3,193	3,222	3,244	3,266	3,188	3,603	3,126	2,714	2,643	43,043	400	0.94%
2021/22	1,707	3,276	3,275	3,282	3,257	3,255	3,167	3,248	3,253	3,202	3,508	3,309	2,844	2,574	43,157	114	0.26%
2022/23	1,707	3,320	3,266	3,266	3,254	3,225	3,249	3,185	3,268	3,198	3,534	3,353	3,008	2,698	43,531	374	0.87%

* Green Box = Largest grade
Yellow = second largest

- Large class sizes will continue to roll through the district
- Enrollment will exceed 40,000 students by Fall 2015
- Regeneration is playing a larger role in the younger classes

Enrollment Projections (Elementary Schools)

	Current	PROJECTIONS									
ELEMENTARY	2012/13	2013/14	2014/15	2015/16	2016/17	2017/18	2018/19	2019/20	2020/21	2021/22	2022/23
DOBIE PRIMARY	676	674	680	688	692	698	704	686	689	706	706
AIKIN ELEMENTARY	732	739	754	741	738	753	746	738	743	743	751
ARAPAHO CLASSICAL MAGNET	557	563	569	578	581	568	566	564	552	553	550
AUDELIA ELEMENTARY	703	700	706	713	722	727	728	730	736	736	736
BIG SPRINGS ELEMENTARY	458	447	448	444	442	434	452	459	453	447	448
BOWIE ELEMENTARY	519	528	540	544	557	568	560	544	552	548	549
BRENTFIELD ELEMENTARY	611	624	641	629	648	653	645	646	639	641	639
BUKHAIR ELEMENTARY	748	773	799	818	840	848	878	887	895	908	922
CANYON CREEK ELEMENTARY	272	288	281	290	284	272	262	269	264	267	268
DARTMOUTH ELEMENTARY	345	326	322	323	319	324	325	339	346	355	353
DOVER ELEMENTARY	637	651	661	666	663	667	666	670	663	655	666
FOREST LANE ELEMENTARY	673	806	811	794	788	781	778	767	767	766	772
FORESTRIDGE ELEMENTARY	697	701	711	712	708	711	707	705	708	702	700
GREENWOOD HILLS ELEMENTARY	426	446	460	475	477	476	452	449	461	441	446
HAMILTON PARK ELEMENTARY	721	727	726	731	730	724	720	720	718	717	713
HARBEN ELEMENTARY	414	432	427	437	455	462	458	460	460	458	457
HENRY ELEMENTARY	448	444	446	432	437	428	428	428	429	427	427
LAKE HIGHLANDS ELEMENTARY	731	750	780	807	815	816	825	814	806	814	806
MARK TWAIN ELEMENTARY	511	523	531	521	514	516	484	483	488	490	502
MARSHALL ELEMENTARY	676	683	698	727	754	764	770	775	762	748	724
MERRIMAN ELEMENTARY	469	480	490	494	481	488	476	477	476	478	477
MOHAWK ELEMENTARY	367	382	393	403	420	440	463	461	463	466	475
MOSS HAVEN ELEMENTARY	441	462	467	468	480	480	479	475	476	474	482
MST MAGNET	617	591	586	585	588	574	588	590	593	584	593
NORTHLAKE ELEMENTARY	660	661	663	674	673	680	674	688	678	684	680
NORTHRICH ELEMENTARY	490	511	530	527	546	549	551	551	548	544	541
NORTHWOOD ELEMENTARY	428	432	437	427	430	447	440	431	425	426	430
PRAIRIE CREEK ELEMENTARY	300	326	334	341	346	350	354	347	346	337	341
PRESTONWOOD ELEMENTARY	418	422	445	457	470	447	465	464	462	466	470
RICHARDSON HEIGHTS ELEMENTARY	484	492	497	499	499	502	494	481	489	490	483



Enrollment Projections - Moderate (Elementary Schools)

	Current	PROJECTIONS									
ELEMENTARY	2012/13	2013/14	2014/15	2015/16	2016/17	2017/18	2018/19	2019/20	2020/21	2021/22	2022/23
RICHARDSON TERRACE ELEMENTARY	561	569	578	594	600	601	605	601	602	600	602
RICHLAND ELEMENTARY	618	665	697	737	766	794	826	824	809	796	789
RISD ACADEMY	890	924	936	954	971	979	966	988	987	979	989
SKYVIEW ELEMENTARY	730	797	838	913	919	945	977	973	957	960	965
SPRING CREEK ELEMENTARY	352	346	345	353	362	362	369	372	377	379	381
SPRING VALLEY ELEMENTARY	449	449	464	463	458	461	458	465	455	461	458
SPRINGRIDGE ELEMENTARY	381	372	360	348	355	347	367	378	384	385	390
STULTS ROAD ELEMENTARY	781	825	842	886	931	921	903	895	872	852	830
WALLACE ELEMENTARY	695	740	768	784	778	785	767	754	753	762	763
WHITE ROCK ELEMENTARY	714	725	754	755	756	775	780	762	764	764	731
YALE ELEMENTARY	468	458	445	448	449	442	448	442	446	448	457
Total Elementary	22,868	23,454	23,860	24,180	24,442	24,559	24,604	24,552	24,493	24,457	24,462
Growth	684	586	406	320	262	117	45	-52	-59	-36	5

- Additional sections added to Forrest Lane, Skyview and Stults causing enrollment to increase
- Future section additions could impact campus enrollments
- Five year elementary growth = 1,691 additional students

Enrollment Projections - Moderate (Junior High)

MIDDLE SCHOOL	2012/13	2013/14	2014/15	2015/16	2016/17	2017/18	2018/19	2019/20	2020/21	2021/22	2022/23
APOLLO JUNIOR HIGH	660	666	682	674	669	690	704	723	718	706	708
FOREST MEADOW JUNIOR HIGH	696	741	851	880	922	983	1,041	1,091	1,106	1,101	1,089
LAKE HIGHLANDS JUNIOR HIGH	742	801	792	819	898	925	967	1,015	999	973	1,009
LIBERTY JUNIOR HIGH	639	657	653	664	642	628	667	692	703	698	691
PARKHILL JUNIOR HIGH	611	631	650	678	681	696	723	723	720	706	708
RICHARDSON NORTH JUNIOR HIGH	602	617	631	671	657	680	742	740	727	779	770
RICHARDSON WEST JUNIOR HIGH	716	769	782	828	857	834	882	891	864	885	875
WESTWOOD JUNIOR HIGH	682	702	642	567	578	552	561	580	595	585	594
Total Middle School	5,348	5,584	5,683	5,781	5,904	5,988	6,287	6,455	6,432	6,433	6,444
Growth	201	236	99	98	123	84	299	168	-23	1	11

- Secondary growth primarily driven by larger grades advancing
- Five year Junior High enrollment growth = 640 additional students

Enrollment Projections - Moderate (High School & Totals)

HIGH SCHOOL	2012/13	2013/14	2014/15	2015/16	2016/17	2017/18	2018/19	2019/20	2020/21	2021/22	2022/23
BERKNER HIGH SCHOOL	2,573	2,550	2,504	2,495	2,518	2,533	2,494	2,498	2,532	2,581	2,636
LAKE HIGHLANDS FRESHMAN CENTER	695	754	765	840	873	900	992	996	1,114	1,099	1,109
LAKE HIGHLANDS HIGH SCHOOL	1,745	1,800	1,961	2,118	2,272	2,396	2,509	2,628	2,772	2,882	3,081
PEARCE HIGH SCHOOL	2,151	2,195	2,273	2,326	2,400	2,467	2,453	2,516	2,581	2,613	2,671
RICHARDSON HIGH SCHOOL	2,588	2,607	2,721	2,796	2,813	2,966	2,954	2,924	3,045	3,018	3,054
Total High School	9,752	9,906	10,224	10,575	10,876	11,262	11,402	11,562	12,044	12,193	12,551
Growth	106	154	318	351	301	386	140	160	482	149	358
Other											
MCAULIFFE LEARNING CENTER	73	73	73	73	73	73	73	73	73	73	73
PASS	1	1	1	1	1	1	1	1	1	1	1
Total Other	74	74	74	74	74	74	74	74	74	74	74
District Total	38,042	39,018	39,841	40,610	41,296	41,883	42,367	42,643	43,043	43,157	43,531
Growth	1,000	976	823	769	686	587	484	276	400	114	374
% Growth	2.7%	2.6%	2.1%	1.9%	1.7%	1.4%	1.2%	0.7%	0.9%	0.3%	0.9%

- High School enrollment growth driven by large younger grades advancing
- Five year High School enrollment growth = 1,510 additional students

“High, Moderate, Low” Forecast Scenarios

		1-year				5-year				10-year	
Forecast - District Total Enrollment	2012/13	2013/14	2014/15	2015/16	2016/17	2017/18	2018/19	2019/20	2020/21	2021/22	2022/23
High Scenario	38,042	39,334	40,541	41,686	42,822	43,939	44,814	45,629	46,262	46,771	47,143
Moderate Scenario	38,042	39,018	39,841	40,610	41,296	41,883	42,367	42,643	43,043	43,157	43,531
Low Scenario	38,042	38,327	38,585	38,820	39,117	39,446	39,625	39,801	39,954	40,067	40,167

- High scenario assumes that RISD MF and SF student yields increase significantly more than TD likely projections
- Low scenario assumes yields plateau and then remain fairly flat

Summary

- District has added 3,183 students during the last three years.
- Changes in home ownership patterns leading to regeneration.
- District growth is primarily a result of increasing apartment yields and regeneration in single-family neighborhoods.
- Younger grades continue to be larger than the High School grades.
- Kindergarten enrollment continues to grow and is the largest class.
- Richardson ISD could see an additional 5,489 students during the next 10 years. (Total Enrollment 2022/23 = 43,531 students)
- District max enrollment between 40,000 - 47,000 students depending on the rate of regeneration in single family homes.