

# RICHARDSON ISD ORGANIZATIONAL CHART 2025-2026

EVERY CHILD. EVERY TEACHER. EVERY LEADER. EVERY DAY.



**Tabitha Branum**  
SUPERINTENDENT

**Emily Doherty**

SUPERINTENDENT'S OFFICE/  
ADMINISTRATIVE MANAGER

**Viri Gutierrez**

BOARD RELATIONS/  
ADMINISTRATIVE MANAGER

**Katherine McKinney**

EXECUTIVE ASSISTANT

**Michael McDonald**

AREA SUPERINTENDENT OF  
BERKNER LC

**Peggy Dillon**

AREA SUPERINTENDENT OF  
PEARCE LC

**Jennie Bates**

AREA SUPERINTENDENT OF  
LAKE HIGHLANDS LC

**Mike Evans**

AREA SUPERINTENDENT OF  
RICHARDSON HIGH LC

**SUPERINTENDENT'S CABINET:**



**Dr. Matthew Gibbins**

ASSISTANT SUPERINTENDENT  
OF ADMINISTRATIVE SERVICES . . . . .2



**Dr. Christopher Goodson**

ASSISTANT SUPERINTENDENT  
OF HUMAN RESOURCES. . . . .3



**Henry Hall**

ASSISTANT SUPERINTENDENT  
OF TECHNOLOGY . . . . .4



**Sandra Hayes**

ASSISTANT SUPERINTENDENT OF BOND  
PLANNING AND IMPLEMENTATION. . . . .4



**Dr. Melissa Heller**

ASSISTANT SUPERINTENDENT  
OF STRATEGY AND ENGAGEMENT . . . . .5



**Mike Jasso**

ASSISTANT SUPERINTENDENT  
OF DISTRICT OPERATIONS. . . . .5



**Dr. Kristin Leeper**

ASSISTANT SUPERINTENDENT  
OF PK-12 TEACHING AND LEARNING SERVICES . . . .6



**David Pate, CPA**

ASSISTANT SUPERINTENDENT  
OF FINANCE AND SUPPORT SERVICES . . . . .7



**Leticia McGowan**

GENERAL COUNSEL . . . . .7

# RICHARDSON ISD ORGANIZATIONAL CHART 2025-2026

EVERY CHILD. EVERY TEACHER. EVERY LEADER. EVERY DAY.



## Dr. Matthew Gibbins

ASSISTANT SUPERINTENDENT OF ADMINISTRATIVE SERVICES

**Teresa Warren**  
EXECUTIVE ASSISTANT

**Dr. Darwin Spiller**  
EXECUTIVE DIRECTOR OF  
TITLE IX COMPLIANCE  
& INVESTIGATIONS

**Katie Barrett**  
SENIOR EXECUTIVE  
DIRECTOR OF SPECIAL  
STUDENT SERVICES

**Ashley Jones**  
EXECUTIVE DIRECTOR  
OF HEALTH SERVICES

**Dr. Jason Tharp**  
DIRECTOR OF STUDENT  
SERVICES

**Lonnie Jordan**  
EXECUTIVE DIRECTOR  
OF ATHLETICS

**Kevin Pitts**  
ASSISTANT ATHLETIC  
DIRECTOR

**Lindsay Ledford**  
ASSISTANT ATHLETIC  
DIRECTOR/ HEALTH  
P.E. DIRECTOR

**Jeff Bradford**  
EXECUTIVE DIRECTOR  
OF FINE ARTS

**Myron Stennett**  
DIRECTOR OF  
VISUAL ARTS

**Stephanie Miller**  
ELEMENTARY MUSIC  
COORDINATOR

**Joe Miniscalco**  
SENIOR EXECUTIVE DIRECTOR  
OF ACCESS AND SPECIALIZED  
PROGRAMMING

**Angie Lee**  
EXECUTIVE DIRECTOR  
OF STUDENT SUCCESS  
AND LEADERSHIP

**Vanessa Montez**  
DIRECTOR OF  
ENROLLMENT  
AND ACCESS

**Cecilia Galvan**  
EXECUTIVE DIRECTOR  
OF ENROLLMENT  
AND ACCESS

**Michael  
Freeman**  
COORDINATING  
DIRECTOR OF  
ENROLLMENT  
AND ACCESS

**Dr. Summer Martin**  
EXECUTIVE DIRECTOR  
COUNSELING AND  
PREVENTION PROGRAMS

**Yadira Coggins**  
DIRECTOR OF  
STUDENT WELFARE

**Dr. Lauren DeBose**  
DIRECTOR OF  
INTERVENTION SERVICES

**Suzanne  
Tsatsoulas**  
DIRECTOR OF STUDENT  
ASSISTANCE PROGRAMS

# RICHARDSON ISD ORGANIZATIONAL CHART 2025-2026

EVERY CHILD. EVERY TEACHER. EVERY LEADER. EVERY DAY.



## Dr. Christopher Goodson

ASSISTANT SUPERINTENDENT OF HUMAN RESOURCES



# RICHARDSON ISD ORGANIZATIONAL CHART 2025-2026

EVERY CHILD. EVERY TEACHER. EVERY LEADER. EVERY DAY.



## Henry Hall

ASSISTANT SUPERINTENDENT OF TECHNOLOGY

### Carolyn Crise

EXECUTIVE ASSISTANT

### Robin Gunter

EXECUTIVE DIRECTOR  
OF INSTRUCTIONAL  
TECHNOLOGY- INSTRUCTION

### Morgan Cave

DIRECTOR OF  
INSTRUCTIONAL  
TECHNOLOGY

### Christopher Yon

EXECUTIVE DIRECTOR  
OF INSTRUCTIONAL  
TECHNOLOGY - OPERATIONS

### TBD

COORDINATING DIRECTOR  
OF NETWORK SERVICES

### Jonna Mayes

TECHNOLOGY SUPPORT  
CENTER MANAGER

### Herb Emerson

CONTRACT COMPLIANCE  
MANAGER

### Charles Mayes

CONTRACT TECHNOLOGY  
TECHNICIAN MANAGER

### Jorge Vasquez

MANAGER OF LEARNING  
SYSTEMS AND DIGITAL  
SYSTEMS

### Muhammad (Haris) Katlia

CYBER SECURITY MANAGER

### Horace Forte

INFRASTRUCTURE MANAGER

### Keith Barkman

DATA CENTER MANAGER

### Robert Acosta

CLIENT SUPPORT MANAGER

### TBD

DOMAIN SERVICES MANAGER



## Sandra Hayes

ASSISTANT SUPERINTENDENT OF BOND  
PLANNING AND IMPLEMENTATION

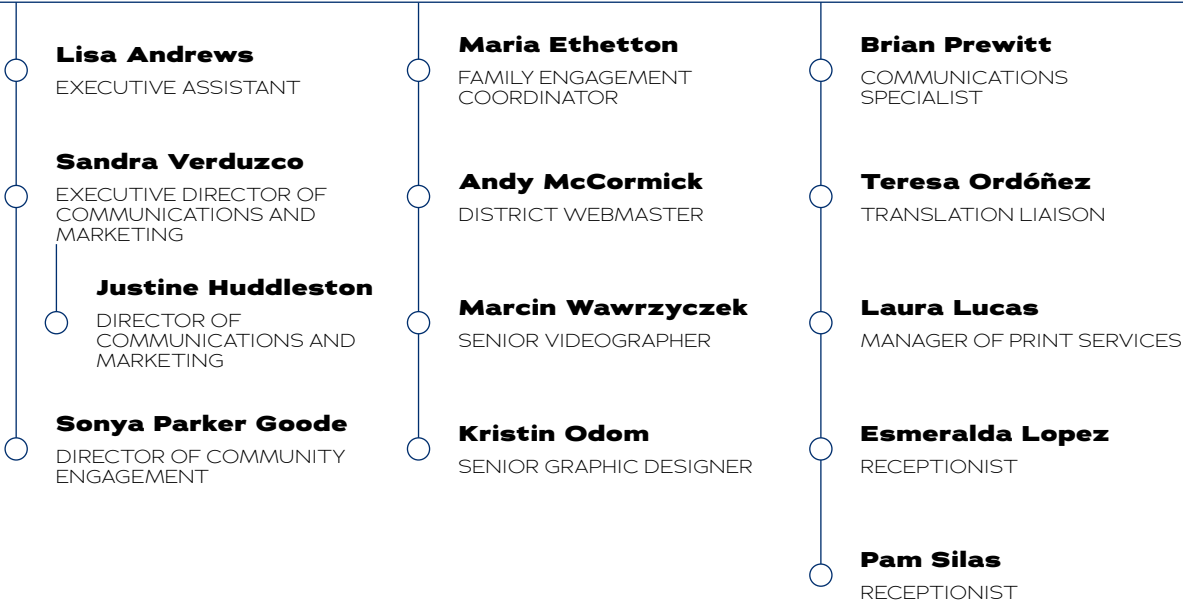
# RICHARDSON ISD ORGANIZATIONAL CHART 2025-2026

EVERY CHILD. EVERY TEACHER. EVERY LEADER. EVERY DAY.



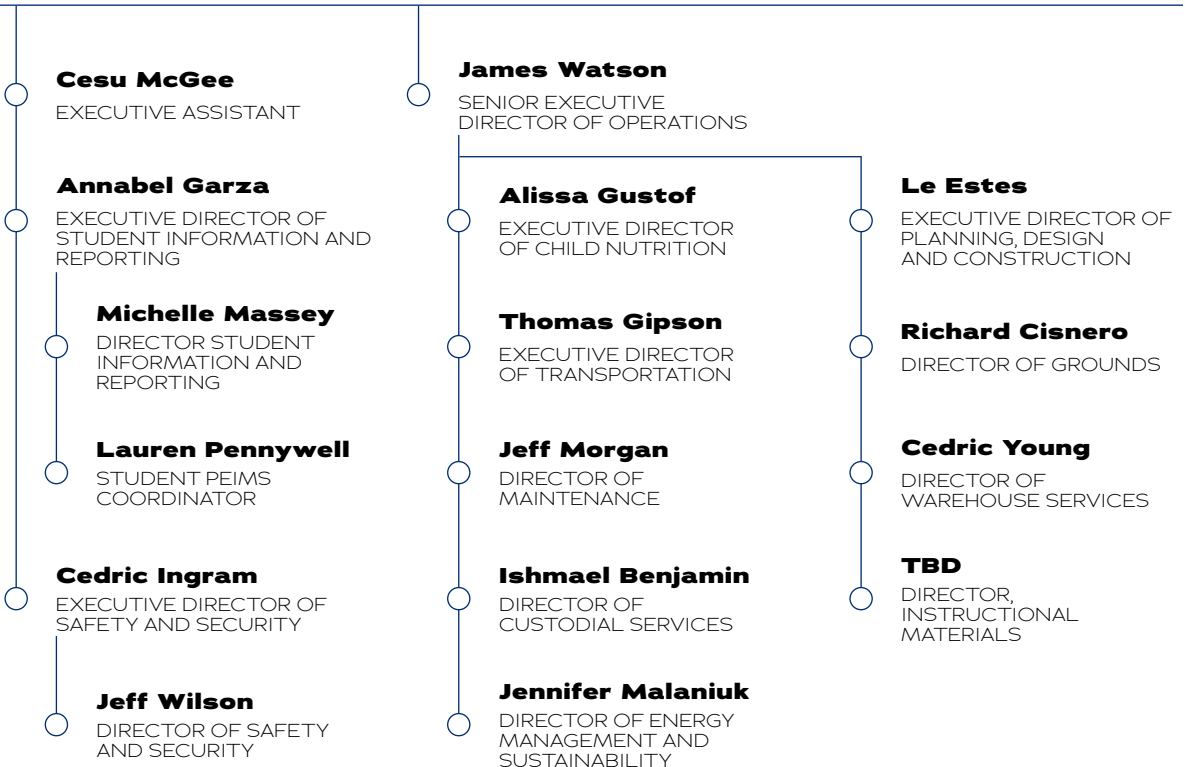
## Dr. Melissa Heller

ASSISTANT SUPERINTENDENT OF STRATEGY AND ENGAGEMENT



## Mike Jasso

ASSISTANT SUPERINTENDENT OF DISTRICT OPERATIONS



# RICHARDSON ISD ORGANIZATIONAL CHART 2025-2026

EVERY CHILD. EVERY TEACHER. EVERY LEADER. EVERY DAY.



## Dr. Kristin Leeper

ASSISTANT SUPERINTENDENT OF PK-12  
TEACHING AND LEARNING SERVICES

### Geneva Monarrez

EXECUTIVE ASSISTANT

### Dr. Gina Ortiz

SENIOR EXECUTIVE DIRECTOR  
OF ACCOUNTABILITY AND  
CONTINUOUS IMPROVEMENT

### Daniel Long

DIRECTOR OF  
APPLICATION  
DEVELOPMENT

### Jill Horton

DIRECTOR OF  
ASSESSMENT

### Trang Vo

DIRECTOR OF DATA  
ANALYSIS AND REPORTING

### Hugh Yuan

DIRECTOR OF RESEARCH  
AND EVALUATION

### Dr. Frank Patranella

DIRECTOR OF TIA  
AND NBCT

### Laurel Dickson

DIRECTOR OF MULTI-  
TIERED SYSTEMS OF  
SUPPORT

### Dr. Luke Hurst

EXECUTIVE DIRECTOR OF  
ADVANCED LEARNING

### Kelsey Karcher

DIRECTOR OF ADVANCED  
LEARNING PROGRAMS  
& SERVICES

### Josh Eason

DIRECTOR OF AVID

### Kimberly Kindred

DIRECTOR OF CCMR

### Dr. Cloris Rangel

EXECUTIVE DIRECTOR OF  
MULTILINGUAL EDUCATION

### Rowena Alibuyog

DIRECTOR OF LOTE AND  
LANGUAGE SUPPORTS

### Tara Sowels

DIRECTOR OF PK-12 ESL

### Lanette Massey- Stinett

DIRECTOR OF BILINGUAL  
PROGRAM SERVICES

### Creighton Bryan

EXECUTIVE DIRECTOR  
OF CAREER AND  
TECHNICAL EDUCATION

### Rochelle Robinson

DIRECTOR OF CAREER  
AND TECHNICAL  
EDUCATION

### Todd Williams

DIRECTOR OF CAREER  
AND TECHNICAL  
EDUCATION

### David Burkhalter

COORDINATING DIRECTOR  
OF EXTENDED LEARNING

### Dr. Susan Hernandez

SENIOR EXECUTIVE DIRECTOR  
OF SCHOOL IMPROVEMENT

### Morgen Crowder

COORDINATING  
DIRECTOR OF TEACHING  
AND LEARNING

### Lisa Steward

DIRECTOR OF K-5  
LITERACY

### Amy Alejandro

DIRECTOR OF 6-12  
READING LANGUAGE ARTS

### Julie Teague

DIRECTOR OF PK-12  
MATHEMATICS

### Seth Bohlman

DIRECTOR OF  
PK-12 SCIENCE

### Alejandra Isais

DIRECTOR OF LIBRARY  
AND INFORMATION  
TECHNOLOGY

### Sue Sweeney

DIRECTOR OF SOCIAL  
STUDIES PK-12

### Katy Phinney

COORDINATING DIRECTOR OF  
EARLY CHILDHOOD SERVICES

### Jessica White

DIRECTOR OF THE CHILD  
LEARNING ACADEMIES

### Kirstyn Hart

DIRECTOR OF LITTLE RAMS  
AND LITTLE WILDCATS  
CLA AT SPRINGRIDGE

# RICHARDSON ISD ORGANIZATIONAL CHART 2025-2026

EVERY CHILD. EVERY TEACHER. EVERY LEADER. EVERY DAY.



## David Pate, CPA

ASSISTANT SUPERINTENDENT OF FINANCE AND SUPPORT SERVICES

**Wendy Evans**  
EXECUTIVE ASSISTANT

**Carrie Rambo**  
EXECUTIVE DIRECTOR OF  
PAYROLL AND BENEFITS

**Robyn Webb**  
EXECUTIVE DIRECTOR  
GRANTS AND ENTITLEMENTS

**Dorcas Mejia**  
DIRECTOR OF TAX SERVICES

**Melody Greig**  
DIRECTOR OF PURCHASING

**Anand Rao**  
EXECUTIVE DIRECTOR OF  
INFORMATION SYSTEMS

**Allison Davenport, CPA**  
EXECUTIVE DIRECTOR  
OF FINANCE

**Edi Truong**  
DIRECTOR OF BUDGET

**Anthony Le**  
DIRECTOR OF  
ACCOUNTING

**Karol Truong**  
DIRECTOR OF BOND  
PROGRAM MANAGEMENT



## Leticia McGowan

GENERAL COUNSEL

**Gilbert R. Garcia**  
ASSISTANT GENERAL  
COUNSEL

**Danielle Hensley**  
PARALEGAL

**TBD**  
INTERNAL AUDITOR

**Kourtney Chrastek**  
RECORDS MANAGEMENT