

RICHARDSON ISD ORGANIZATIONAL CHART 2025-2026

EVERY CHILD. EVERY TEACHER. EVERY LEADER. EVERY DAY.



Tabitha Branum
SUPERINTENDENT

Emily Doherty

SUPERINTENDENT'S OFFICE/
ADMINISTRATIVE MANAGER

Viri Gutierrez

BOARD RELATIONS/
ADMINISTRATIVE MANAGER

Katherine McKinney

EXECUTIVE ASSISTANT

Michael McDonald

AREA SUPERINTENDENT OF
BERKNER LC

Peggy Dillon

AREA SUPERINTENDENT OF
PEARCE LC

Jennie Bates

AREA SUPERINTENDENT OF
LAKE HIGHLANDS LC

Mike Evans

AREA SUPERINTENDENT OF
RICHARDSON HIGH LC

SUPERINTENDENT'S CABINET:



Dr. Matthew Gibbins

ASSISTANT SUPERINTENDENT
OF ADMINISTRATIVE SERVICES2



Dr. Christopher Goodson

ASSISTANT SUPERINTENDENT
OF HUMAN RESOURCES.3



Henry Hall

ASSISTANT SUPERINTENDENT
OF TECHNOLOGY4



Dr. Melissa Heller

ASSISTANT SUPERINTENDENT
OF STRATEGY AND ENGAGEMENT4



Mike Jasso

ASSISTANT SUPERINTENDENT
OF DISTRICT OPERATIONS.5



Dr. Kristin Leeper

ASSISTANT SUPERINTENDENT
OF PK-12 TEACHING AND LEARNING SERVICES6



David Pate, CPA

ASSISTANT SUPERINTENDENT
OF FINANCE AND SUPPORT SERVICES7



Leticia McGowan

GENERAL COUNSEL7

RICHARDSON ISD ORGANIZATIONAL CHART 2025-2026

EVERY CHILD. EVERY TEACHER. EVERY LEADER. EVERY DAY.



Dr. Matthew Gibbins

ASSISTANT SUPERINTENDENT OF ADMINISTRATIVE SERVICES

Teresa Warren
EXECUTIVE ASSISTANT

Dr. Darwin Spiller
EXECUTIVE DIRECTOR OF
TITLE IX COMPLIANCE
& INVESTIGATIONS

Katie Barrett
SENIOR EXECUTIVE
DIRECTOR OF SPECIAL
STUDENT SERVICES

Ashley Jones
EXECUTIVE DIRECTOR
OF HEALTH SERVICES

Dr. Jason Tharp
DIRECTOR OF STUDENT
SERVICES

Lonnie Jordan
EXECUTIVE DIRECTOR
OF ATHLETICS

Kevin Pitts
ASSISTANT ATHLETIC
DIRECTOR

Lindsay Ledford
ASSISTANT ATHLETIC
DIRECTOR/ HEALTH
P.E. DIRECTOR

Jeff Bradford
EXECUTIVE DIRECTOR
OF FINE ARTS

Myron Stennett
DIRECTOR OF
VISUAL ARTS

Stephanie Miller
ELEMENTARY MUSIC
COORDINATOR

Joe Miniscalco
SENIOR EXECUTIVE DIRECTOR
OF ACCESS AND SPECIALIZED
PROGRAMMING

Angie Lee
EXECUTIVE DIRECTOR
OF STUDENT SUCCESS
AND LEADERSHIP

Vanessa Montez
DIRECTOR OF
ENROLLMENT
AND ACCESS

Cecilia Galvan
EXECUTIVE DIRECTOR
OF ENROLLMENT
AND ACCESS

**Michael
Freeman**
COORDINATING
DIRECTOR OF
ENROLLMENT
AND ACCESS

Dr. Summer Martin
EXECUTIVE DIRECTOR
COUNSELING AND
PREVENTION PROGRAMS

Yadira Coggins
DIRECTOR OF
STUDENT WELFARE

Dr. Lauren DeBose
DIRECTOR OF
INTERVENTION SERVICES

**Suzanne
Tsatsoulas**
DIRECTOR OF STUDENT
ASSISTANCE PROGRAMS

RICHARDSON ISD ORGANIZATIONAL CHART 2025-2026

EVERY CHILD. EVERY TEACHER. EVERY LEADER. EVERY DAY.



Dr. Christopher Goodson

ASSISTANT SUPERINTENDENT OF HUMAN RESOURCES



RICHARDSON ISD ORGANIZATIONAL CHART 2025-2026

EVERY CHILD. EVERY TEACHER. EVERY LEADER. EVERY DAY.



Henry Hall

ASSISTANT SUPERINTENDENT OF TECHNOLOGY

Carolyn Crise

EXECUTIVE ASSISTANT

Robin Gunter

EXECUTIVE DIRECTOR OF INSTRUCTIONAL TECHNOLOGY- INSTRUCTION

Morgan Cave

DIRECTOR OF INSTRUCTIONAL TECHNOLOGY

Christopher Yon

EXECUTIVE DIRECTOR OF INSTRUCTIONAL TECHNOLOGY – OPERATIONS

TBD

COORDINATING DIRECTOR OF NETWORK SERVICES

Jonna Mayes

TECHNOLOGY SUPPORT CENTER MANAGER

Herb Emerson

CONTRACT COMPLIANCE MANAGER

Charles Mayes

CONTRACT TECHNOLOGY TECHNICIAN MANAGER

Jorge Vasquez

MANAGER OF LEARNING SYSTEMS AND DIGITAL SYSTEMS

Muhammad (Haris) Katlia

CYBER SECURITY MANAGER

Horace Forte

INFRASTRUCTURE MANAGER

Keith Barkman

DATA CENTER MANAGER

Robert Acosta

CLIENT SUPPORT MANAGER

TBD

DOMAIN SERVICES MANAGER



Dr. Melissa Heller

ASSISTANT SUPERINTENDENT OF STRATEGY AND ENGAGEMENT

Lisa Andrews

EXECUTIVE ASSISTANT

Sandra Verduzco

EXECUTIVE DIRECTOR OF COMMUNICATIONS AND MARKETING

Justine Huddleston

DIRECTOR OF COMMUNICATIONS AND MARKETING

Sonya Parker Goode

DIRECTOR OF COMMUNITY ENGAGEMENT

Maria Ethetton

FAMILY ENGAGEMENT COORDINATOR

Andy McCormick

DISTRICT WEBMASTER

Marcin Wawrzyczek

SENIOR VIDEOGRAPHER

Kristin Odom

SENIOR GRAPHIC DESIGNER

Brian Prewitt

COMMUNICATIONS SPECIALIST

Teresa Ordóñez

TRANSLATION LIAISON

Laura Lucas

MANAGER OF PRINT SERVICES

Esmeralda Lopez

RECEPTIONIST

Pam Silas

RECEPTIONIST

RICHARDSON ISD ORGANIZATIONAL CHART 2025-2026

EVERY CHILD. EVERY TEACHER. EVERY LEADER. EVERY DAY.



Mike Jasso

ASSISTANT SUPERINTENDENT OF DISTRICT OPERATIONS

Cesu McGee
EXECUTIVE ASSISTANT

Annabel Garza
EXECUTIVE DIRECTOR OF
STUDENT INFORMATION AND
REPORTING

Michelle Massey
DIRECTOR STUDENT
INFORMATION AND
REPORTING

Lauren Pennywell
STUDENT PEIMS
COORDINATOR

Cedric Ingram
EXECUTIVE DIRECTOR OF
SAFETY AND SECURITY

Jeff Wilson
DIRECTOR OF SAFETY
AND SECURITY

James Watson
SENIOR EXECUTIVE
DIRECTOR OF OPERATIONS

Alissa Gustof
EXECUTIVE DIRECTOR
OF CHILD NUTRITION

Thomas Gipson
EXECUTIVE DIRECTOR
OF TRANSPORTATION

Jeff Morgan
DIRECTOR OF
MAINTENANCE

Ishmael Benjamin
DIRECTOR OF
CUSTODIAL SERVICES

Jennifer Malaniuk
DIRECTOR OF ENERGY
MANAGEMENT AND
SUSTAINABILITY

Le Estes
EXECUTIVE DIRECTOR OF
PLANNING, DESIGN
AND CONSTRUCTION

Richard Cisnero
DIRECTOR OF GROUNDS

Cedric Young
DIRECTOR OF
WAREHOUSE SERVICES

TBD
DIRECTOR,
INSTRUCTIONAL
MATERIALS

RICHARDSON ISD ORGANIZATIONAL CHART 2025-2026

EVERY CHILD. EVERY TEACHER. EVERY LEADER. EVERY DAY.



Dr. Kristin Leeper

ASSISTANT SUPERINTENDENT OF PK-12
TEACHING AND LEARNING SERVICES

Geneva Monarrez

EXECUTIVE ASSISTANT

Dr. Gina Ortiz

SENIOR EXECUTIVE DIRECTOR
OF ACCOUNTABILITY AND
CONTINUOUS IMPROVEMENT

Daniel Long

DIRECTOR OF
APPLICATION
DEVELOPMENT

Jill Horton

DIRECTOR OF
ASSESSMENT

Trang Vo

DIRECTOR OF DATA
ANALYSIS AND REPORTING

Hugh Yuan

DIRECTOR OF RESEARCH
AND EVALUATION

Dr. Frank Patranella

DIRECTOR OF TIA
AND NBCT

Laurel Dickson

DIRECTOR OF MULTI-
TIERED SYSTEMS OF
SUPPORT

Dr. Luke Hurst

EXECUTIVE DIRECTOR OF
ADVANCED LEARNING

Kelsey Karcher

DIRECTOR OF ADVANCED
LEARNING PROGRAMS
& SERVICES

Josh Eason

DIRECTOR OF AVID

Kimberly Kindred

DIRECTOR OF CCMR

Dr. Cloris Rangel

EXECUTIVE DIRECTOR OF
MULTILINGUAL EDUCATION

Rowena Alibuyog

DIRECTOR OF LOTE AND
LANGUAGE SUPPORTS

Tara Sowels

DIRECTOR OF PK-12 ESL

Lanette Massey- Stinett

DIRECTOR OF BILINGUAL
PROGRAM SERVICES

Katy Phinney

EXECUTIVE DIRECTOR OF
EARLY CHILDHOOD AND
EXTENDED LEARNING
SERVICES

Jessica White

DIRECTOR OF THE CHILD
LEARNING ACADEMIES

Kirstyn Hart

DIRECTOR OF LITTLE RAMS
AND LITTLE WILDCATS CLA
AT SPRINGRIDGE

David Burkhalter

COORDINATING DIRECTOR
OF EXTENDED LEARNING

Dr. Susan Hernandez

SENIOR EXECUTIVE DIRECTOR
OF SCHOOL IMPROVEMENT

Morgen Crowder

COORDINATING
DIRECTOR OF TEACHING
AND LEARNING

Lisa Steward

DIRECTOR OF K-5
LITERACY

Amy Alejandro

DIRECTOR OF 6-12
READING LANGUAGE ARTS

Julie Teague

DIRECTOR OF PK-12
MATHEMATICS

Seth Bohlman

DIRECTOR OF
PK-12 SCIENCE

Alejandra Isais

DIRECTOR OF LIBRARY
AND INFORMATION
TECHNOLOGY

Sue Sweeney

DIRECTOR OF SOCIAL
STUDIES PK-12

Creighton Bryan

EXECUTIVE DIRECTOR
OF CAREER AND
TECHNICAL EDUCATION

Rochelle Robinson

DIRECTOR OF CAREER
AND TECHNICAL
EDUCATION

Todd Williams

DIRECTOR OF CAREER AND
TECHNICAL EDUCATION

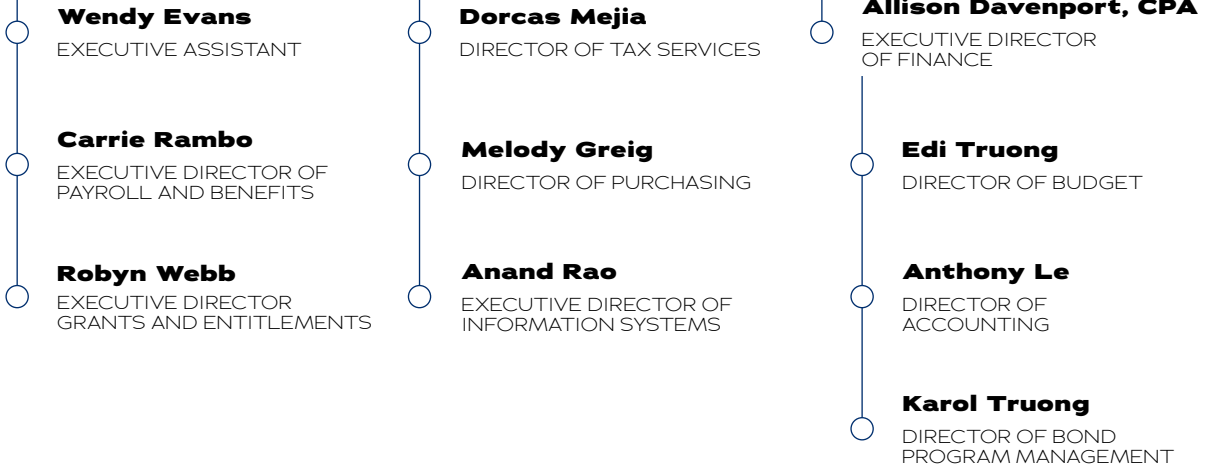
RICHARDSON ISD ORGANIZATIONAL CHART 2025-2026

EVERY CHILD. EVERY TEACHER. EVERY LEADER. EVERY DAY.



David Pate, CPA

ASSISTANT SUPERINTENDENT OF FINANCE AND SUPPORT SERVICES



Leticia McGowan

GENERAL COUNSEL

