

RICHARDSON ISD ORGANIZATIONAL CHART 2025-2026

EVERY CHILD. EVERY TEACHER. EVERY LEADER. EVERY DAY.



Tabitha Branum
SUPERINTENDENT

Emily Doherty

SUPERINTENDENT'S OFFICE/
ADMINISTRATIVE MANAGER

Viri Gutierrez

BOARD RELATIONS/
ADMINISTRATIVE MANAGER



Jennie Bates

ASSISTANT SUPERINTENDENT FOR SCHOOL LEADERSHIP
AND SUPERINTENDENT SUPPORT
AND AREA SUPERINTENDENT OF LAKE HIGHLANDS LC

Katherine McKinney

EXECUTIVE ASSISTANT

Michael McDonald

AREA SUPERINTENDENT OF BERKNER LC

Peggy Dillon

AREA SUPERINTENDENT OF PEARCE LC

Mike Evans

AREA SUPERINTENDENT OF RICHARDSON HIGH LC

SUPERINTENDENT'S CABINET:



Jennie Bates

ASSISTANT SUPERINTENDENT
FOR SCHOOL LEADERSHIP AND
SUPERINTENDENT SUPPORT AND AREA
SUPERINTENDENT OF LAKE HIGHLANDS LC



Dr. Matthew Gibbins

ASSISTANT SUPERINTENDENT
OF ADMINISTRATIVE SERVICES2



Dr. Christopher Goodson

ASSISTANT SUPERINTENDENT
OF HUMAN RESOURCES.3



Henry Hall

ASSISTANT SUPERINTENDENT
OF TECHNOLOGY4



Dr. Melissa Heller

ASSISTANT SUPERINTENDENT
OF STRATEGY AND ENGAGEMENT4



Mike Jasso

ASSISTANT SUPERINTENDENT
OF DISTRICT OPERATIONS.5



Dr. Kristin Leeper

ASSISTANT SUPERINTENDENT OF PK-12
TEACHING AND LEARNING SERVICES6



David Pate, CPA

ASSISTANT SUPERINTENDENT
OF FINANCE AND SUPPORT SERVICES7



Leticia McGowan

GENERAL COUNSEL7

RICHARDSON ISD ORGANIZATIONAL CHART 2025-2026

EVERY CHILD. EVERY TEACHER. EVERY LEADER. EVERY DAY.



Dr. Matthew Gibbins

ASSISTANT SUPERINTENDENT OF ADMINISTRATIVE SERVICES

Teresa Warren
EXECUTIVE ASSISTANT

Dr. Darwin Spiller
EXECUTIVE DIRECTOR OF
TITLE IX COMPLIANCE
& INVESTIGATIONS

Katie Barrett
SENIOR EXECUTIVE
DIRECTOR OF SPECIAL
STUDENT SERVICES

Ashley Jones
EXECUTIVE DIRECTOR
OF HEALTH SERVICES

Dr. Jason Tharp
DIRECTOR OF STUDENT
SERVICES

Lonnie Jordan
EXECUTIVE DIRECTOR
OF ATHLETICS

Kevin Pitts
ASSISTANT ATHLETIC
DIRECTOR

Lindsay Ledford
ASSISTANT ATHLETIC
DIRECTOR/ HEALTH
P.E. DIRECTOR

Jeff Bradford
EXECUTIVE DIRECTOR
OF FINE ARTS

Myron Stennett
DIRECTOR OF
VISUAL ARTS

Stephanie Miller
ELEMENTARY MUSIC
COORDINATOR

Joe Miniscalco
SENIOR EXECUTIVE DIRECTOR
OF ACCESS AND SPECIALIZED
PROGRAMMING

Angie Lee
EXECUTIVE DIRECTOR
OF STUDENT SUCCESS
AND LEADERSHIP

Vanessa Montez
DIRECTOR OF
ENROLLMENT
AND ACCESS

Cecilia Galvan
EXECUTIVE DIRECTOR
OF ENROLLMENT
AND ACCESS

**Michael
Freeman**
COORDINATING
DIRECTOR OF
ENROLLMENT
AND ACCESS

Dr. Summer Martin
EXECUTIVE DIRECTOR
COUNSELING AND
PREVENTION PROGRAMS

Yadira Coggins
DIRECTOR OF
STUDENT WELFARE

Dr. Lauren DeBose
DIRECTOR OF
INTERVENTION SERVICES

**Suzanne
Tsatsoulas**
DIRECTOR OF STUDENT
ASSISTANCE PROGRAMS

RICHARDSON ISD ORGANIZATIONAL CHART 2025-2026

EVERY CHILD. EVERY TEACHER. EVERY LEADER. EVERY DAY.



Dr. Christopher Goodson

ASSISTANT SUPERINTENDENT OF HUMAN RESOURCES



RICHARDSON ISD ORGANIZATIONAL CHART 2025-2026

EVERY CHILD. EVERY TEACHER. EVERY LEADER. EVERY DAY.



Henry Hall

ASSISTANT SUPERINTENDENT OF TECHNOLOGY

Carolyn Crise

EXECUTIVE ASSISTANT

Robin Gunter

EXECUTIVE DIRECTOR
OF INSTRUCTIONAL
TECHNOLOGY- INSTRUCTION

Morgan Cave

DIRECTOR OF
INSTRUCTIONAL
TECHNOLOGY

Christopher Yon

EXECUTIVE DIRECTOR
OF INSTRUCTIONAL
TECHNOLOGY – OPERATIONS

TBD

COORDINATING DIRECTOR
OF NETWORK SERVICES

Jonna Mayes

TECHNOLOGY SUPPORT
CENTER MANAGER

Herb Emerson

CONTRACT COMPLIANCE
MANAGER

Charles Mayes

CONTRACT TECHNOLOGY
TECHNICIAN MANAGER

Jorge Vasquez

MANAGER OF LEARNING
SYSTEMS AND DIGITAL
SYSTEMS

Muhammad (Haris) Katlia

CYBER SECURITY MANAGER

Horace Forte

INFRASTRUCTURE MANAGER

Keith Barkman

DATA CENTER MANAGER

Robert Acosta

CLIENT SUPPORT MANAGER

TBD

DOMAIN SERVICES MANAGER



Dr. Melissa Heller

ASSISTANT SUPERINTENDENT OF STRATEGY AND ENGAGEMENT

Lisa Andrews

EXECUTIVE ASSISTANT

Sandra Verduzco

EXECUTIVE DIRECTOR OF
COMMUNICATIONS AND
MARKETING

Justine Huddleston

DIRECTOR OF
COMMUNICATIONS AND
MARKETING

Sonya Parker Goode

DIRECTOR OF COMMUNITY
ENGAGEMENT

Maria Ethetton

FAMILY ENGAGEMENT
COORDINATOR

Andy McCormick

DISTRICT WEBMASTER

Marcin Wawrzyczek

SENIOR VIDEOGRAPHER

Kristin Odom

SENIOR GRAPHIC DESIGNER

Brian Prewitt

COMMUNICATIONS
SPECIALIST

Teresa Ordóñez

TRANSLATION LIAISON

Laura Lucas

MANAGER OF PRINT SERVICES

Esmeralda Lopez

RECEPTIONIST

Pam Silas

RECEPTIONIST

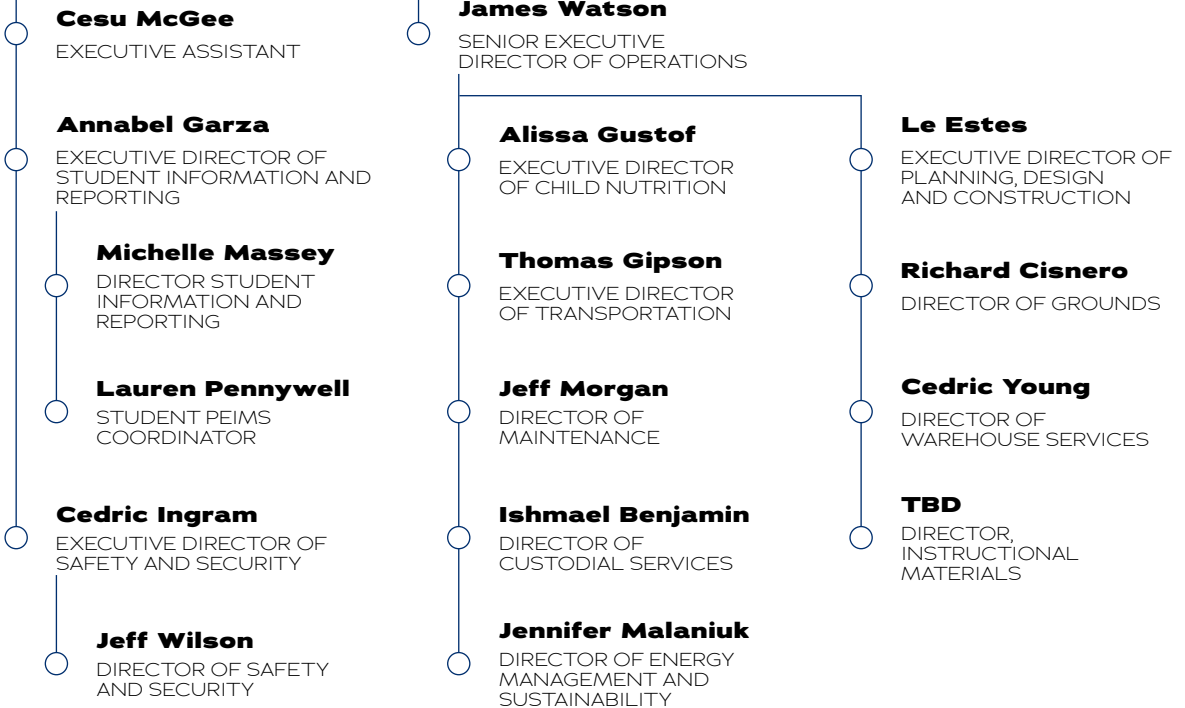
RICHARDSON ISD ORGANIZATIONAL CHART 2025-2026

EVERY CHILD. EVERY TEACHER. EVERY LEADER. EVERY DAY.



Mike Jasso

ASSISTANT SUPERINTENDENT OF DISTRICT OPERATIONS



RICHARDSON ISD ORGANIZATIONAL CHART 2025-2026

EVERY CHILD. EVERY TEACHER. EVERY LEADER. EVERY DAY.



Dr. Kristin Leeper

ASSISTANT SUPERINTENDENT OF PK-12
TEACHING AND LEARNING SERVICES

Geneva Monarrez

EXECUTIVE ASSISTANT

Dr. Gina Ortiz

SENIOR EXECUTIVE DIRECTOR
OF ACCOUNTABILITY AND
CONTINUOUS IMPROVEMENT

Daniel Long

DIRECTOR OF
APPLICATION
DEVELOPMENT

Jill Horton

DIRECTOR OF
ASSESSMENT

Trang Vo

DIRECTOR OF DATA
ANALYSIS AND REPORTING

Hugh Yuan

DIRECTOR OF RESEARCH
AND EVALUATION

Dr. Frank Patranella

DIRECTOR OF TIA
AND NBCT

Laurel Dickson

DIRECTOR OF MULTI-
TIERED SYSTEMS OF
SUPPORT

Dr. Luke Hurst

EXECUTIVE DIRECTOR OF
ADVANCED LEARNING

Kelsey Karcher

DIRECTOR OF ADVANCED
LEARNING PROGRAMS
& SERVICES

Josh Eason

DIRECTOR OF AVID

Kimberly Kindred

DIRECTOR OF CCMR

Dr. Cloris Rangel

EXECUTIVE DIRECTOR OF
MULTILINGUAL EDUCATION

Rowena Alibuyog

DIRECTOR OF LOTE AND
LANGUAGE SUPPORTS

Tara Sowels

DIRECTOR OF PK-12 ESL

Lanette Massey- Stinett

DIRECTOR OF BILINGUAL
PROGRAM SERVICES

Katy Phinney

EXECUTIVE DIRECTOR OF
EARLY CHILDHOOD AND
EXTENDED LEARNING
SERVICES

Jessica White

DIRECTOR OF THE CHILD
LEARNING ACADEMIES

Kirstyn Hart

DIRECTOR OF LITTLE RAMS
AND LITTLE WILDCATS CLA
AT SPRINGRIDGE

David Burkhalter

COORDINATING DIRECTOR
OF EXTENDED LEARNING

Dr. Susan Hernandez

SENIOR EXECUTIVE DIRECTOR
OF SCHOOL IMPROVEMENT

Morgen Crowder

COORDINATING
DIRECTOR OF TEACHING
AND LEARNING

Lisa Steward

DIRECTOR OF K-5
LITERACY

Amy Alejandro

DIRECTOR OF 6-12
READING LANGUAGE ARTS

Julie Teague

DIRECTOR OF PK-12
MATHEMATICS

Seth Bohlman

DIRECTOR OF
PK-12 SCIENCE

Alejandra Isais

DIRECTOR OF LIBRARY
AND INFORMATION
TECHNOLOGY

Sue Sweeney

DIRECTOR OF SOCIAL
STUDIES PK-12

Creighton Bryan

EXECUTIVE DIRECTOR
OF CAREER AND
TECHNICAL EDUCATION

Rochelle Robinson

DIRECTOR OF CAREER
AND TECHNICAL
EDUCATION

Todd Williams

DIRECTOR OF CAREER AND
TECHNICAL EDUCATION

RICHARDSON ISD ORGANIZATIONAL CHART 2025-2026

EVERY CHILD. EVERY TEACHER. EVERY LEADER. EVERY DAY.



David Pate, CPA

ASSISTANT SUPERINTENDENT OF FINANCE AND SUPPORT SERVICES

Wendy Evans
EXECUTIVE ASSISTANT

Carrie Rambo
EXECUTIVE DIRECTOR OF
PAYROLL AND BENEFITS

Robyn Webb
EXECUTIVE DIRECTOR
GRANTS AND ENTITLEMENTS

Dorcas Mejia
DIRECTOR OF TAX SERVICES

Melody Greig
DIRECTOR OF PURCHASING

Anand Rao
EXECUTIVE DIRECTOR OF
INFORMATION SYSTEMS

Allison Davenport, CPA
EXECUTIVE DIRECTOR
OF FINANCE

Edi Truong
DIRECTOR OF BUDGET

Anthony Le
DIRECTOR OF
ACCOUNTING

Karol Truong
DIRECTOR OF BOND
PROGRAM MANAGEMENT



Leticia McGowan

GENERAL COUNSEL

Gilbert R. Garcia
ASSISTANT GENERAL
COUNSEL

Danielle Hensley
PARALEGAL

TBD
INTERNAL AUDITOR

Kourtney Chrastek
RECORDS MANAGEMENT